



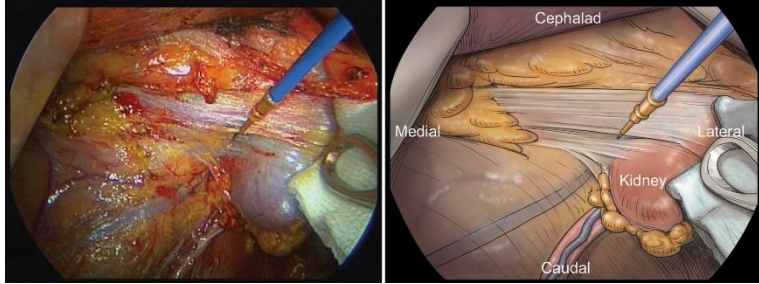
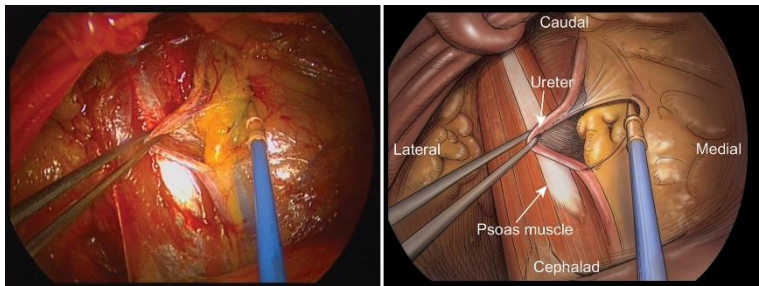
YONSEI  
UNIVERSITY

# Adobe를 활용한 논문 'Figure' 정리 방법

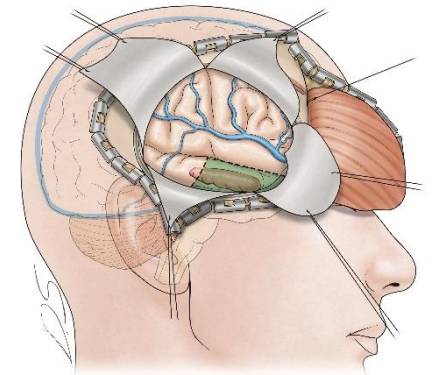
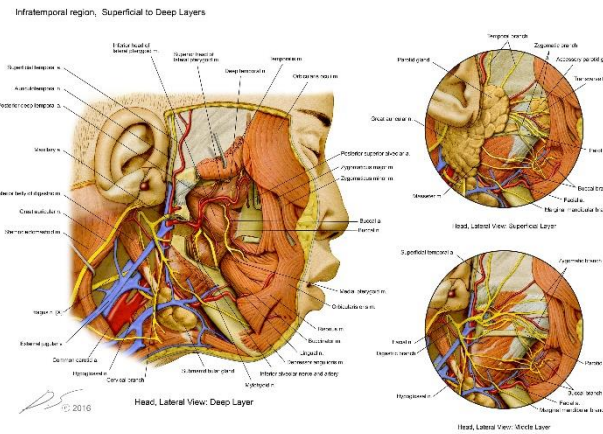
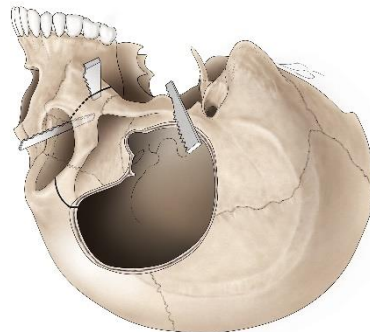
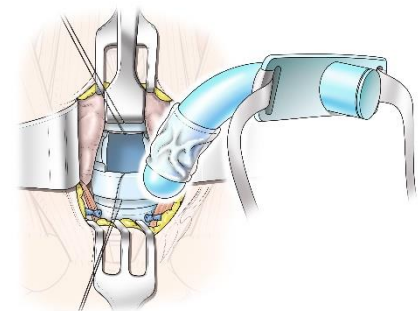
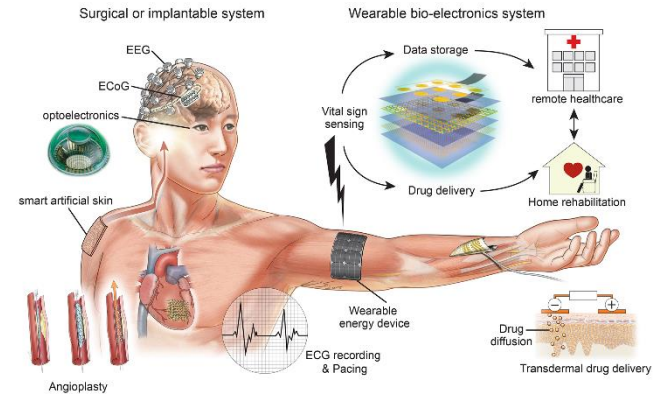
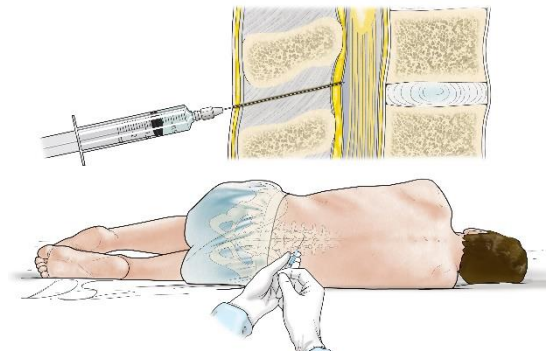
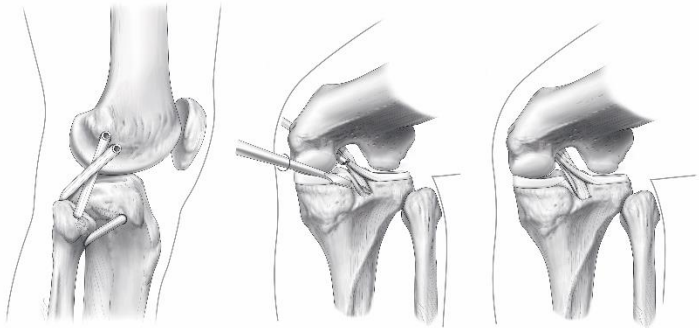
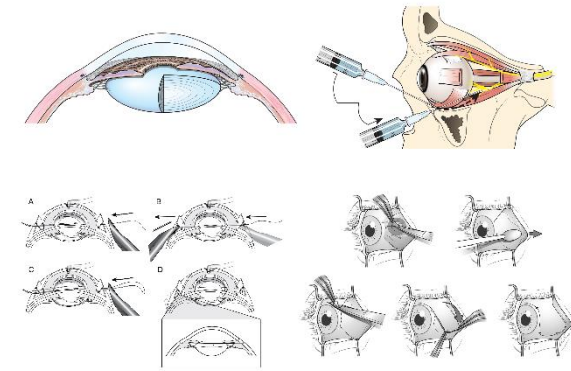
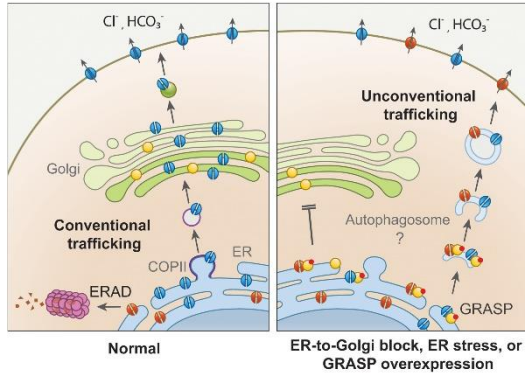
(Cloud 활용 방법 및 Adobe Photoshop,  
Illustrator 중심으로)

*Severance*

Medical Illustrator  
장동수



- Wild type CFTR
- GRASP
- ΔF508 CFTR
- phospho-GRASP



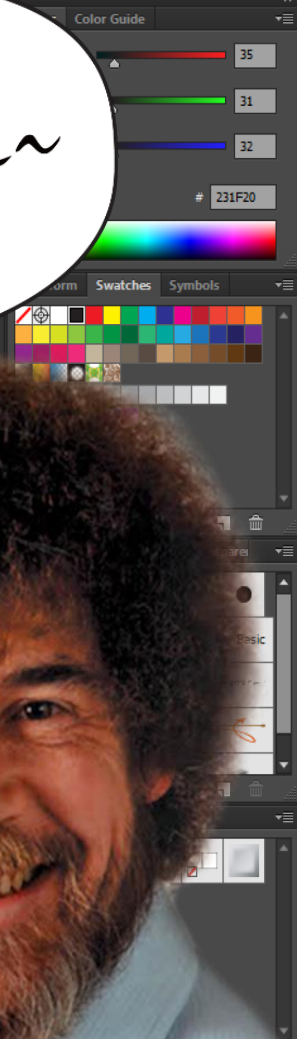
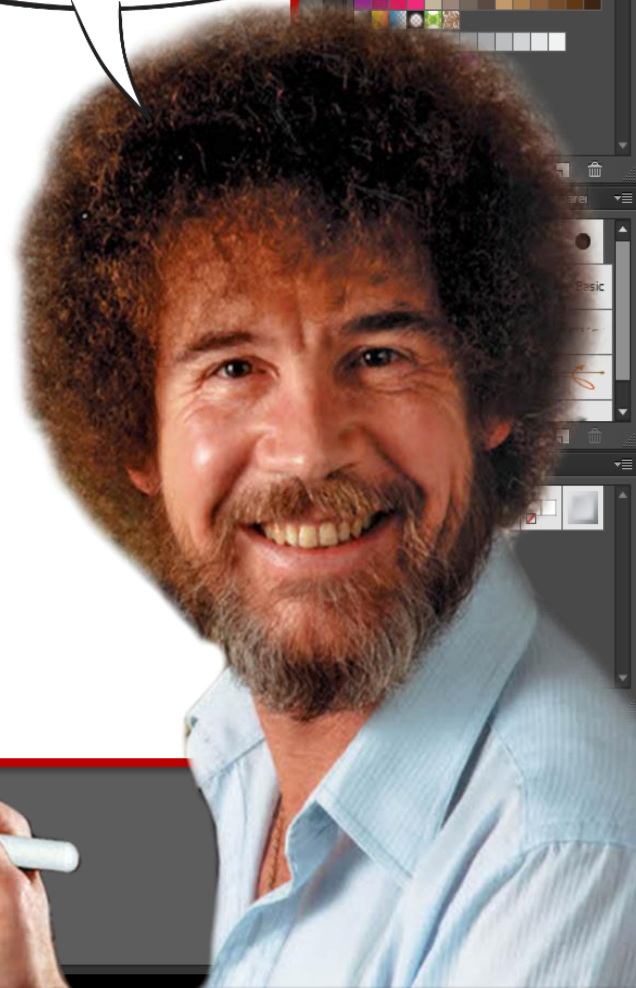
전혀 어렵지 않아요~

# "Adobe Illustrator를 활용한 논문 'Figure' 정리 방법"

Medical Illustrator  
장 동 수



연세대학교 의과대학  
YONSEI UNIVERSITY  
COLLEGE OF MEDICINE











**Adobe Creative Cloud  
폴더 공유 방법**

**Adobe Photoshop 사진보정**

**Adobe Illustrator  
Figure 정리 방법**



iCloud



Adobe Creative Cloud



Google Drive



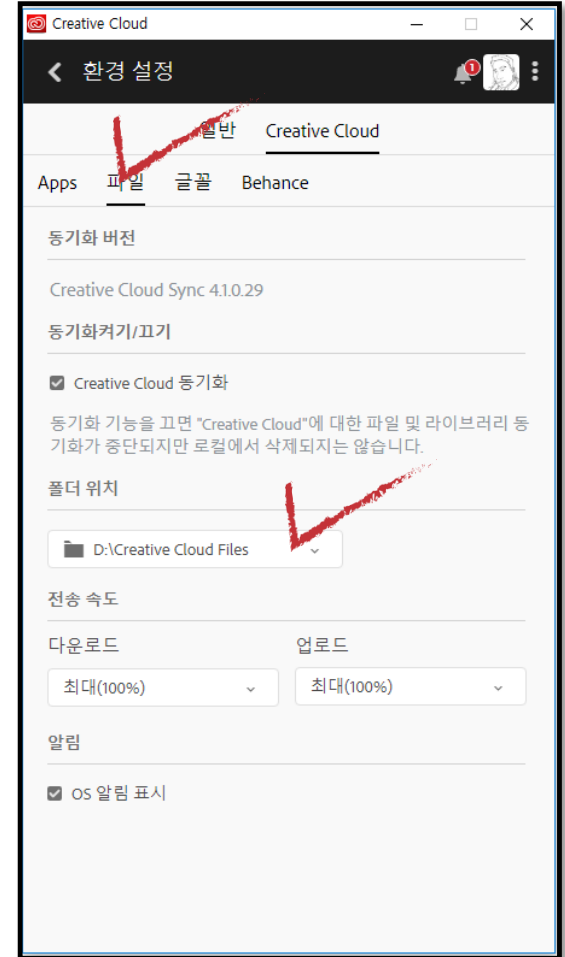
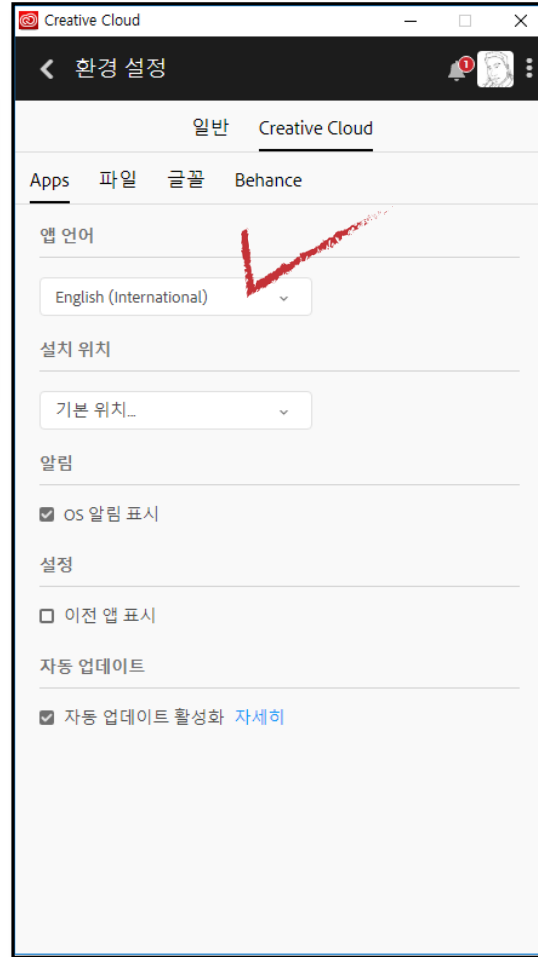
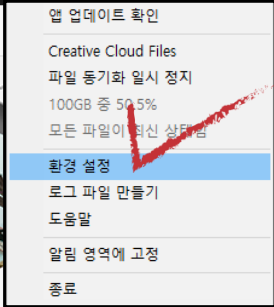
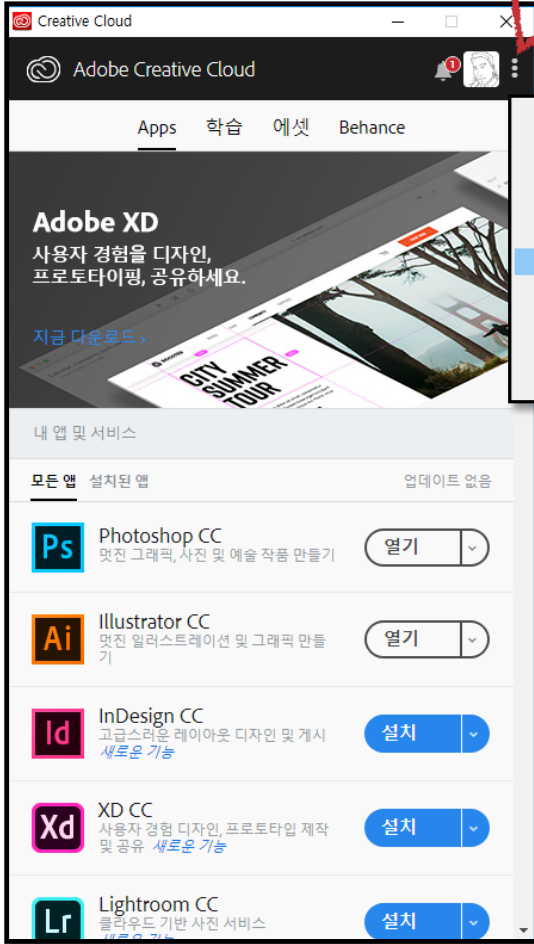
**Dropbox**



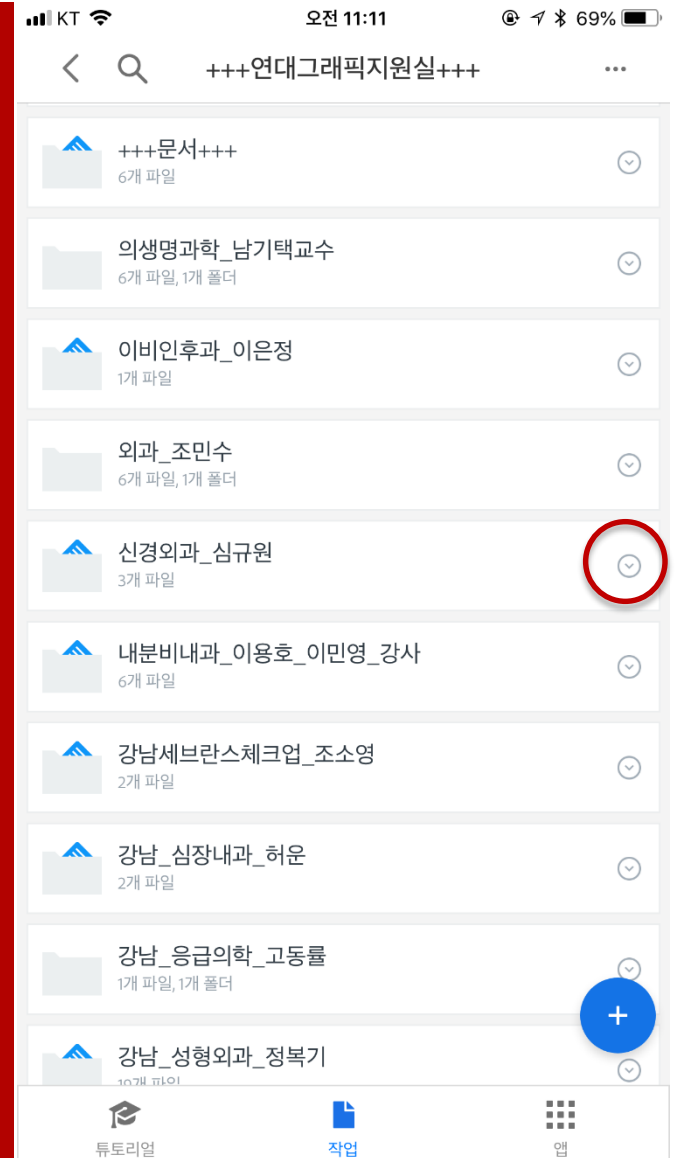
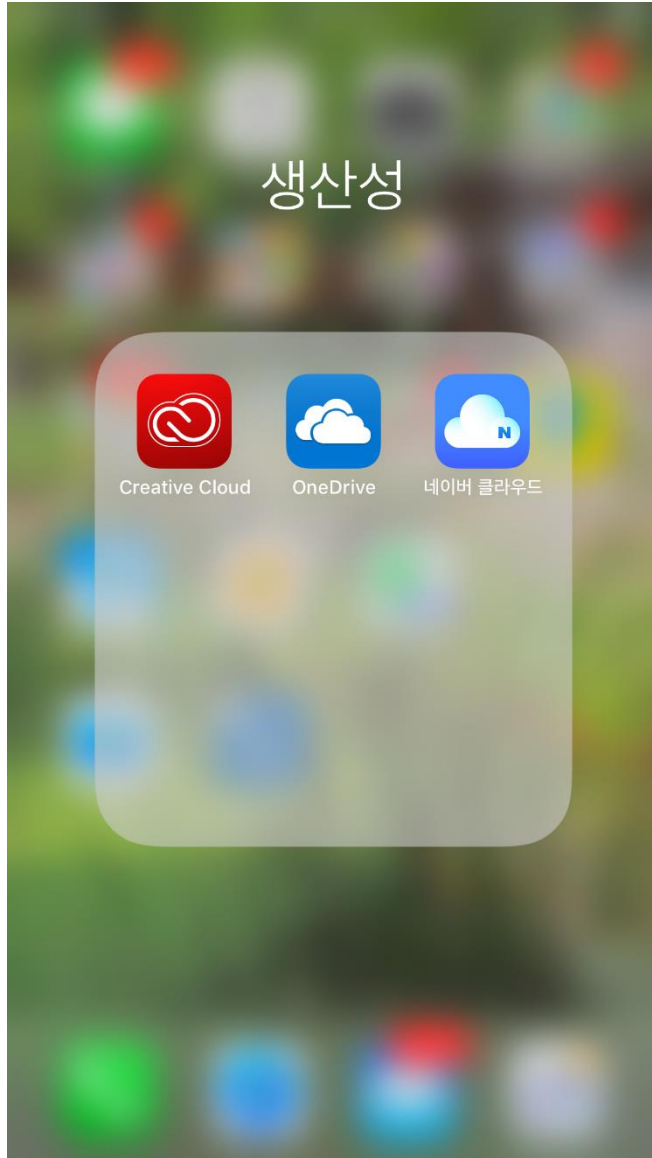
**OneDrive**



# Adobe Creative Cloud PC 설정방법

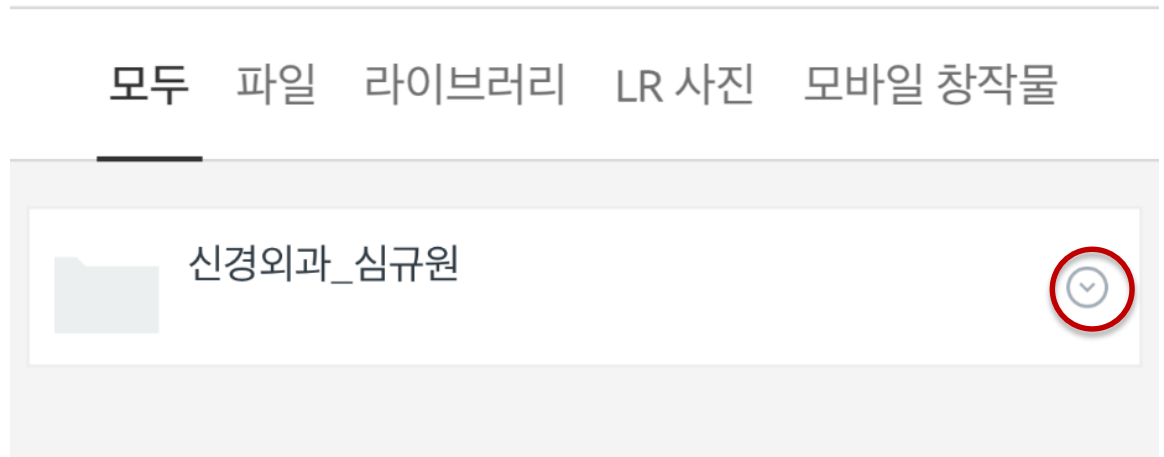
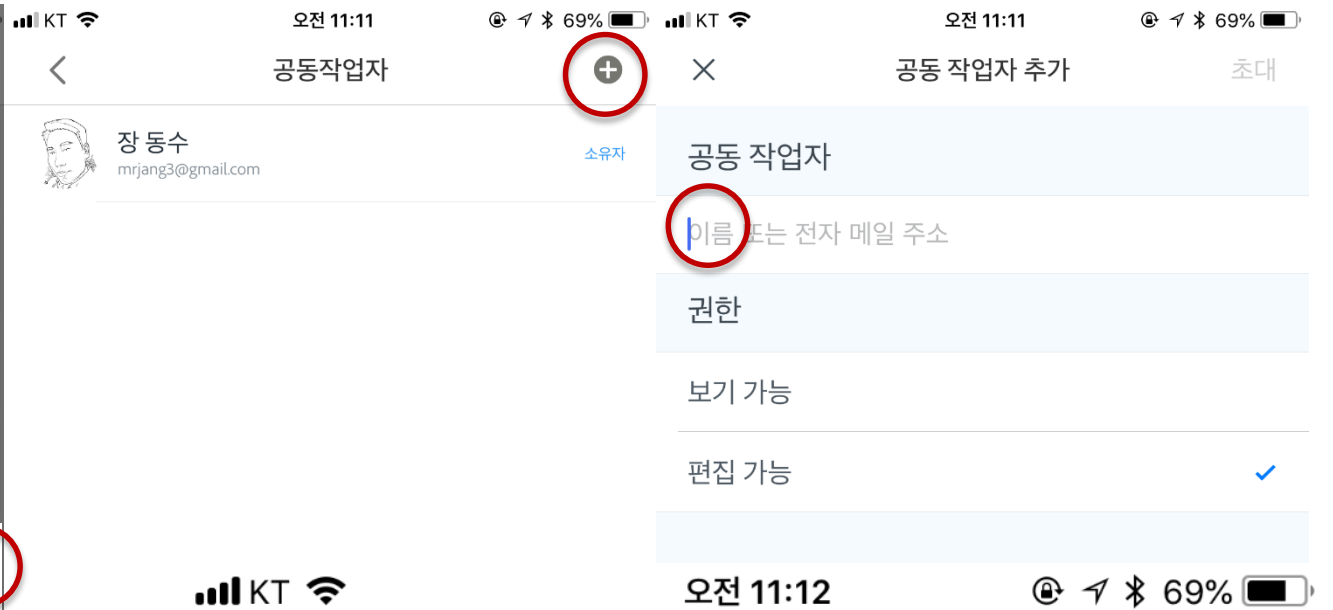
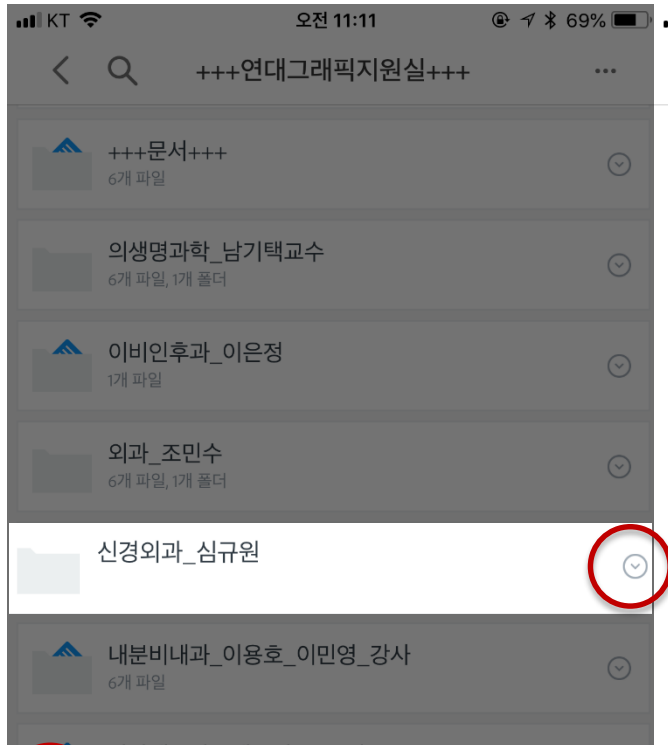


# Adobe Creative Cloud 모바일 폴더 공유설정





# Adobe Creative Cloud 모바일 폴더 공유설정





설치된 모바일 앱



Photoshop Mix

이미지를 언제든지 변환하고 향상할 수 있습니다.



Photoshop Express

쉽고 빠르고 재미있게 사진을 편집할 수 있습니다.



Illustrator Draw

레이어를 이용한 확장 가능한 벡터 일러스트레이션을 제작합니다.



Comp CC

인쇄, 웹 및 모바일을 위한 아이디어를 신속하게 구현할 수 있습니다.



Premiere Clip

개별 클립을 빠르고 재미있게 수준 높은 동영상으로 편집할 수 있습니다.



Capture CC

브러시, 색상, 패턴, 재질, 유형 및 모양을 빠르게 캡처, 편집, 공유하세요.







Apps 학습 에셋 Behance

파일 글꼴 Market



폰터 열기

웹에서 보기



14.42% 사용됨

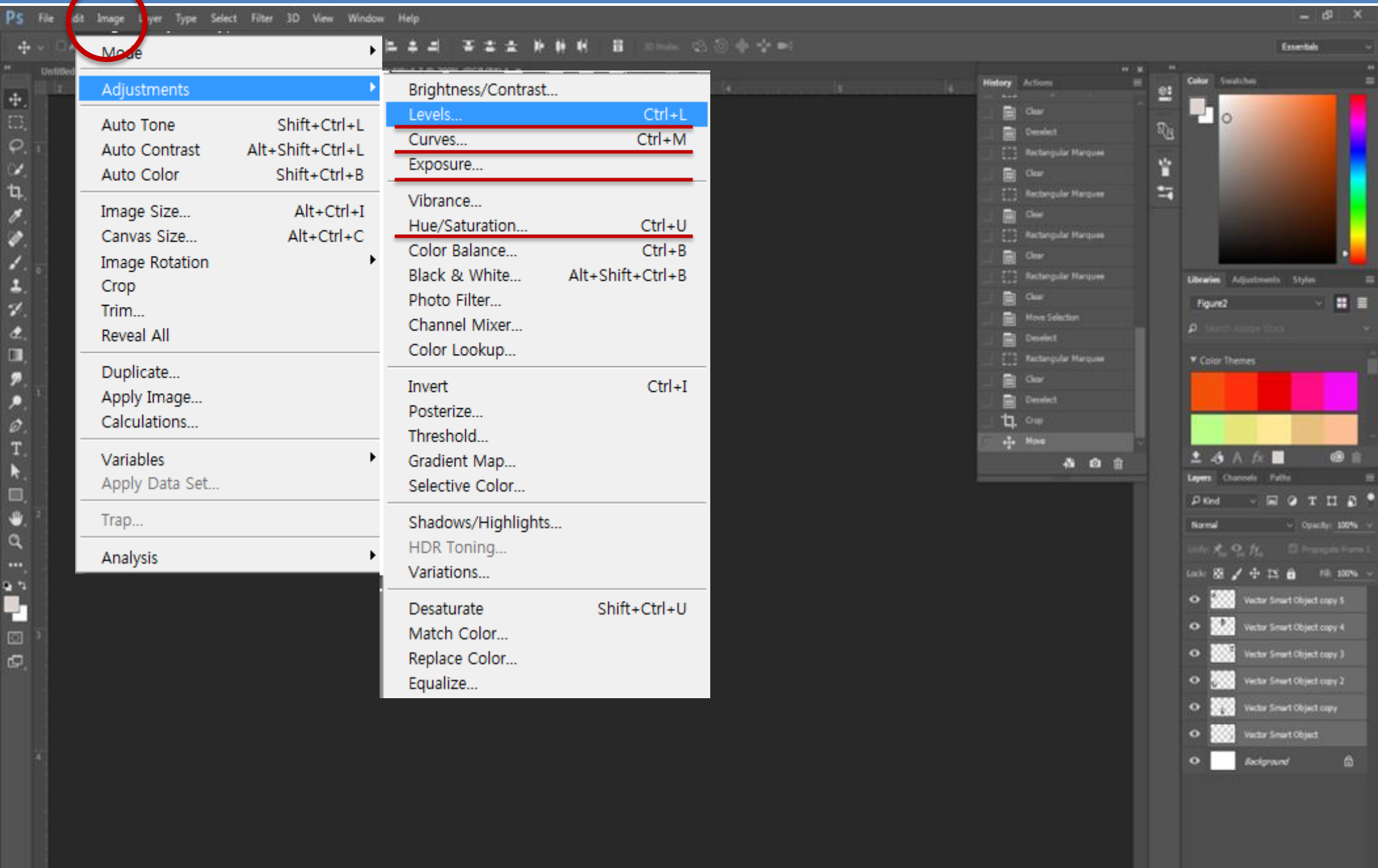
14.42GB/100GB

[스토리지 업그레이드](#)

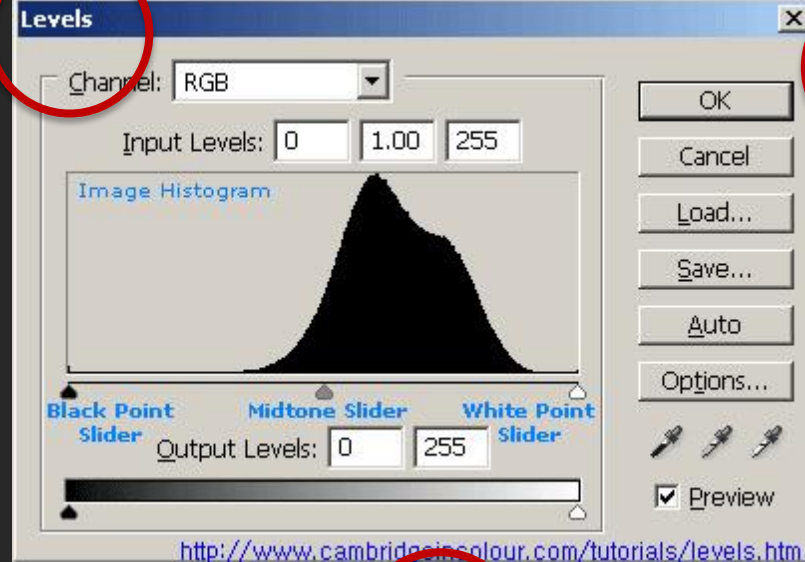


최신 상태임

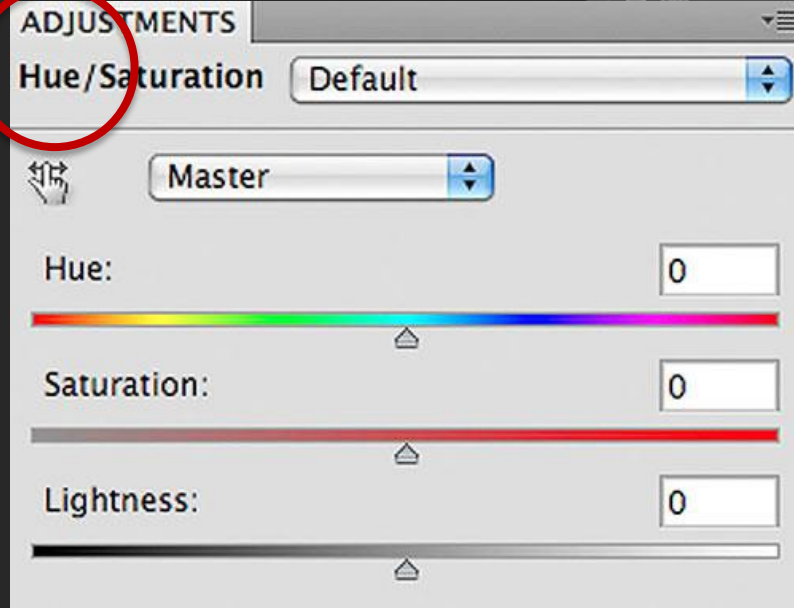
# Adobe Photoshop 사진보정



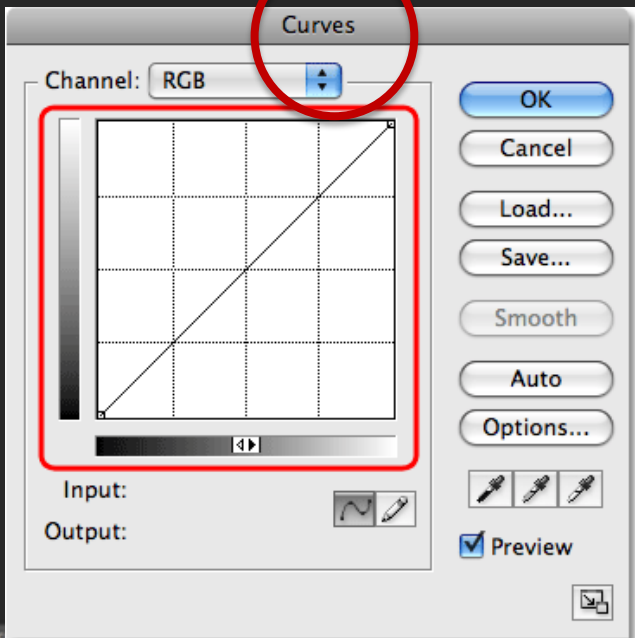
# Adobe Photoshop 사진보정



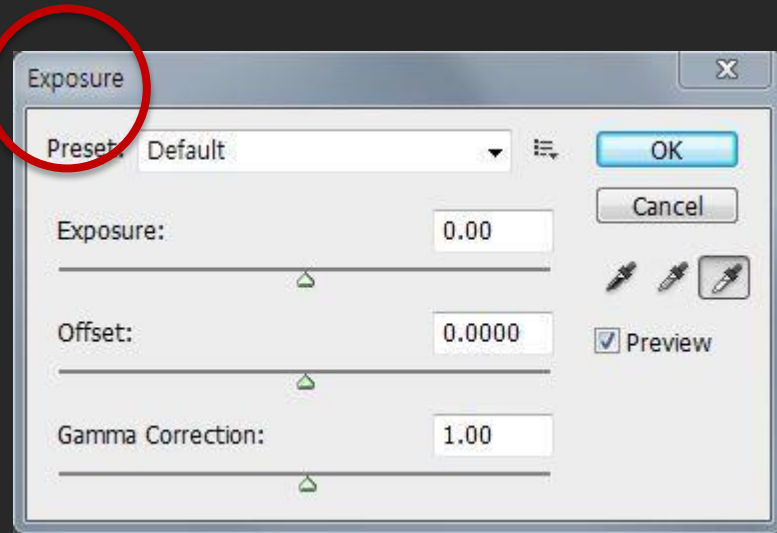
The Levels dialog box is shown with the 'Channel' set to 'RGB'. The 'Input Levels' are 0, 1.00, and 255. The 'Image Histogram' shows a bell-shaped curve. The 'Output Levels' are 0 and 255. The 'Black Point Slider', 'Midtone Slider', and 'White Point Slider' are visible. The 'Preview' checkbox is checked. A URL is provided at the bottom: <http://www.cambridgecolour.com/tutorials/levels.htm>



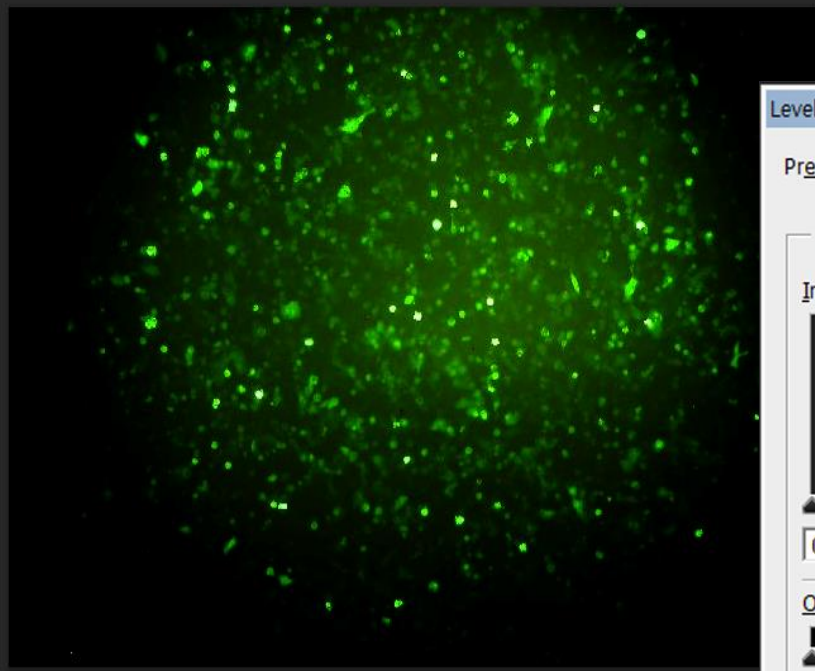
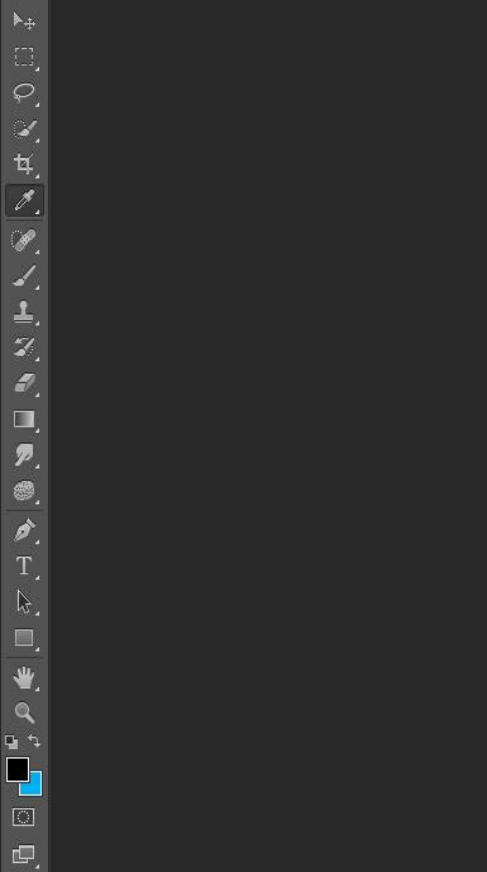
The Hue/Saturation dialog box is shown with the 'Master' dropdown selected. The 'Hue', 'Saturation', and 'Lightness' sliders are all set to 0. The 'Preview' checkbox is checked.



The Curves dialog box is shown with the 'Channel' set to 'RGB'. The 'Input' and 'Output' sliders are visible. The 'Preview' checkbox is checked.



The Exposure dialog box is shown with the 'Preset' set to 'Default'. The 'Exposure' slider is set to 0.00, the 'Offset' is 0.0000, and the 'Gamma Correction' is 1.00. The 'Preview' checkbox is checked.



History Actions

- Untitled-1
- New
- Paste
- Layer Via Copy
- Levels

Histogram Navigator

A histogram showing the distribution of pixel intensities in the image, with a peak in the green channel.

Adjustments

Add an adjustment

- Levels
- Curves
- Color Balance
- Channel Mixer
- Color Lookup
- Gradient Map
- Image Adjustment
- Layer Knobs
- Layer Properties
- Layer Style
- Layer Style Blend
- Layer Style Blend
- Layer Style Blend
- Layer Style Blend

Layers Channels Paths

Kind

Levels

Preset: Custom

Channel: RGB

Input Levels:

A histogram showing the distribution of pixel intensities in the image, with a peak in the green channel. Two red circles are drawn around the input level sliders, highlighting the current values of 0 and 1.94.

0 1.94 255

Output Levels:

0 255

OK Cancel Auto Options...

Preview





# Adobe Illustrator Figure 정리 방법

Figure types 구분

Photoshop, Illustrator 차이

RGB 와 CMYK 구분

꼭 필요한 Illustrator 메뉴 확인

SPSS 그래프 추출하는 방법

R 그래프 추출하는 방법

embed/ Ai 이미지포함

Clipping Mask 기능 및 Align

Figure 크기와 논문형식에 맞춰 Artboards 크기조절

Tiff, eps 또는 PDF 변환

# Figure types

Line Art

Grayscale

Halftones

Combination Figures

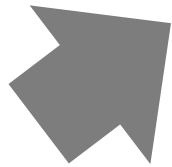
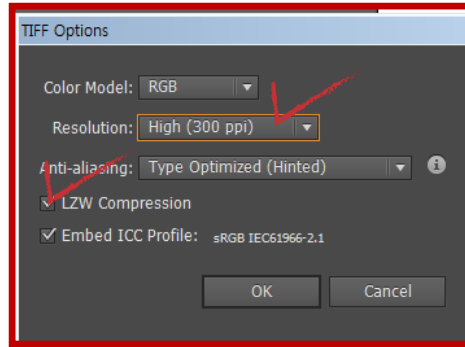
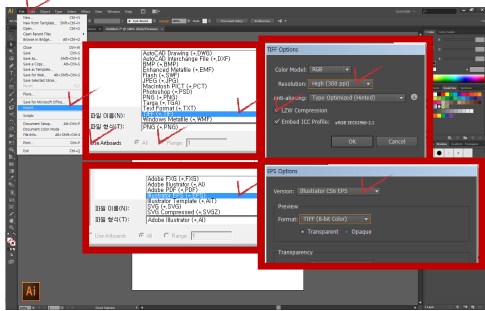
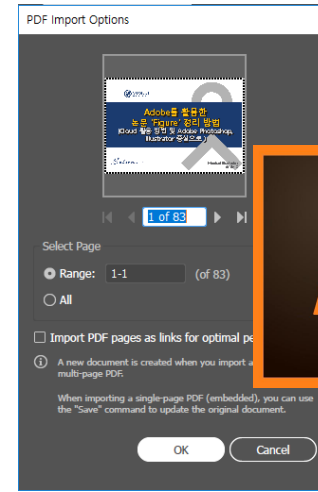
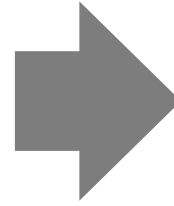
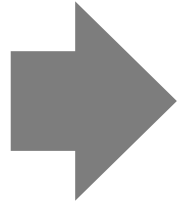
Format

**Tiff or EPS**

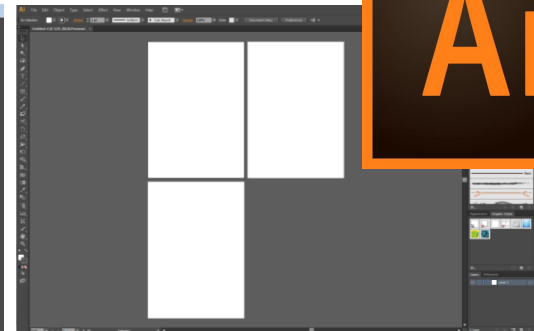
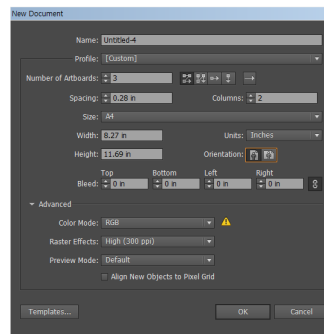
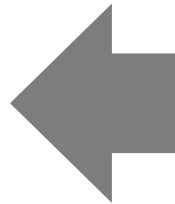
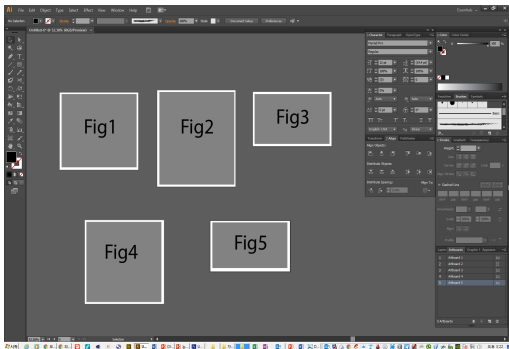
Minimum Resolution: 300 dpi

Tiff : Tagged Image File Format

EPS: Encapsulated PostScript



# Tiff & eps



# Bitmap

PSD

TIFF

JPEG

GIF

PNG

...

# Vector

AI

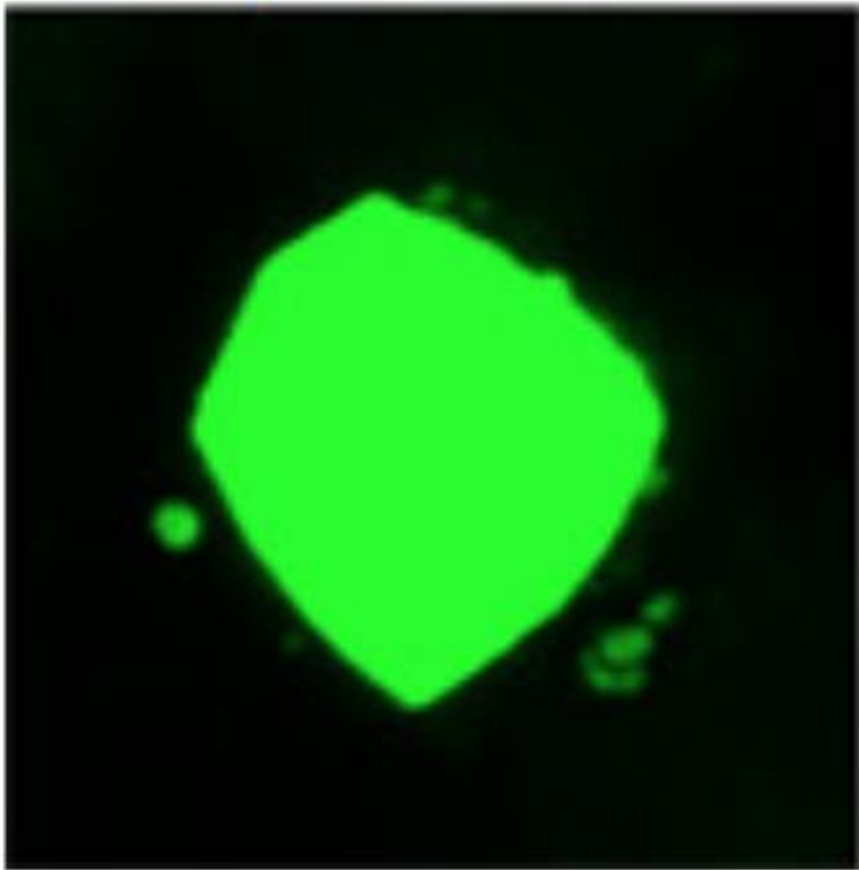
EPS

EMF

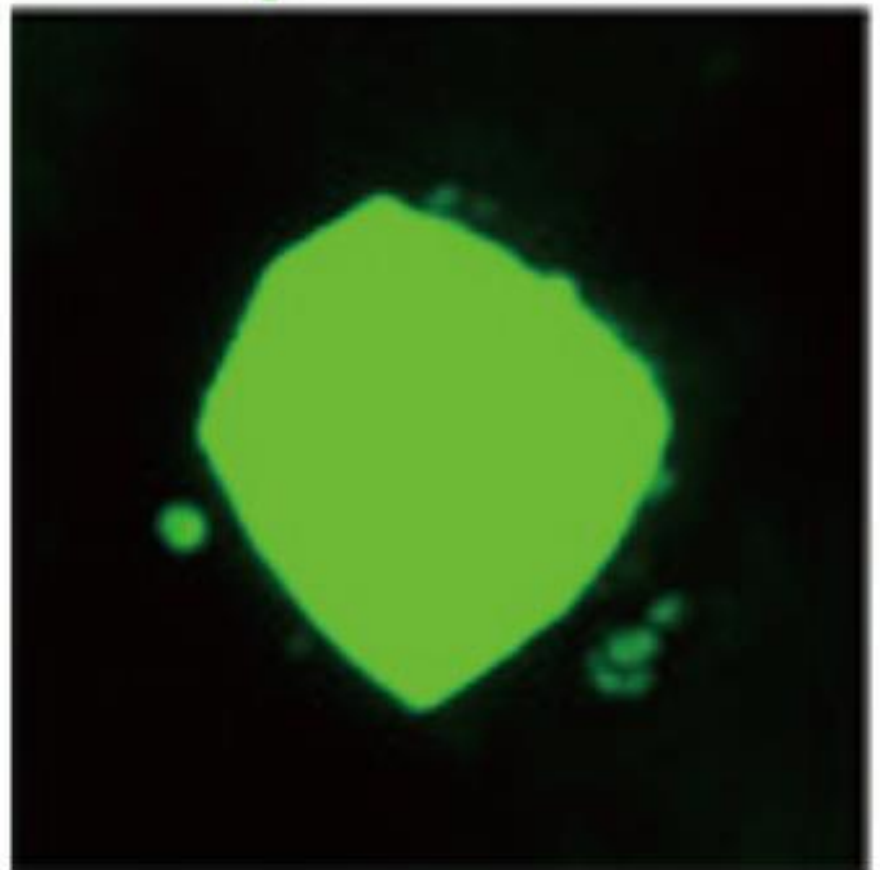
WMF

...





**RGB**

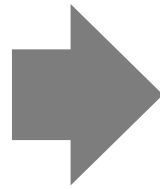


**CMYK**

# RGB

# CMYK





# 꼭 필요한 Illustrator 메뉴 확인

The image shows the Adobe Illustrator CC interface with several tools and panels highlighted by yellow circles and annotated with Korean text. The annotations are as follows:

- 선택 툴-개체를 선택/움직임** (Selection tool - select/move objects) points to the black arrow tool.
- 직접 선택 툴-선택 툴과 같음+일부분만 선택** (Direct Selection tool - same as selection tool + select part) points to the white arrow tool.
- 펜툴 - 포인트를 눌러 개체를 그림** (Pen tool - draw objects by clicking points) points to the pen tool.
- 문자 툴-텍스트 입력** (Text tool - text input) points to the text tool (T).
- 아트보드 툴-작업창 크기 조정/생성/제거/위치변경** (Artboard tool - adjust/create/delete/move workspace) points to the artboard tool.
- 손 툴-보이는 작업창을 자유자재로 움직임** (Hand tool - move visible workspace freely) points to the hand tool.
- 돋보기 툴 - 작업창을 확대/축소 시킴** (Zoom tool - zoom workspace) points to the zoom tool.

On the right side, the **Character** panel is visible, showing settings for the **Touch Type Tool** and **Myriad Pro** font. The **Stroke** panel is also visible, showing settings for **Weight: 1 pt** and **Cap: Square**. The **Layers** panel at the bottom right shows **1 Artboard 1**.



# Window 단축키

control + c 복사

control + v 붙여넣기

control + z 실행 취소

control + x 잘라내기

control + f 앞으로 가져오기

control + b 뒤로 보내기

control + 2 고정하기

control + alt + 2 고정해제

control + 3 감추기

control + alt + 3 나타내기

control + G 그룹하기

control + shift + G 그룹풀기

# Mac 단축키

command + c 복사

command + v 붙여넣기

command + z 실행 취소

command + x 잘라내기

command + f 앞으로 가져오기

command + b 뒤로 보내기

command + 2 고정하기

command + alt + 2 고정해제

command + 3 감추기

command + alt + 3 나타내기

command + G 그룹하기

command + shift + G 그룹풀기





---

spv ➡ 도표편집기 ➡ eps ➡ Ai ➡ Tiff & eps

# SPSS 그래프 추출하는 방법

IBM SPSS Statistics Viewer interface showing a boxplot of AREG values for two groups (K19- and K19+). The boxplot is displayed in the main window, and a '도표 편집기' (Chart Editor) window is open, showing the boxplot with a yellow highlight on the K19- box. A '특성' (Properties) dialog box is also open, showing the '막대 옵션' (Bar Options) tab with a red checkmark. The '특성' dialog shows '막대(B)' selected under '상자도표 및 오차막대 유형' (Boxplot and Error Bar Type). The '도표 편집기' window shows the '막대 옵션' tab with a red checkmark. The '특성' dialog shows the '막대(B)' option selected under '상자도표 및 오차막대 유형' (Boxplot and Error Bar Type). The '도표 편집기' window shows the '막대 옵션' tab with a red checkmark. The '특성' dialog shows the '막대(B)' option selected under '상자도표 및 오차막대 유형' (Boxplot and Error Bar Type).

도표 편집기

특성

도표 크기 | 채움 및 경계 | 범주형 | 막대 옵션 | 변수

너비

막대(B) 28 %

군집(U) 100 %

상자, 종위수 선 및 오차막대 너비 연결(L)

빈도를 기준으로 한 척도 상자도표 및 오차막대 너비(S)

상자도표 및 오차막대 유형

I형 막대

수렴도표(W)

막대(B)

적용(A) | 닫기 | 도움말(H)

IBM SPSS Statistics 프로세서 준비 완료 | H: 504, W: 629 pt | 오후 1:39 2014-02-13





- Log
- Boxplot
- NPar Tests
  - Title
  - Notes
  - Active Dataset
  - Mann-Whitney Te
  - Ranks
  - Test Statistic
- Log
- Explore
  - Title
  - Notes
  - Active Dataset
  - group
  - Title
  - Case Proces
  - Descriptives
  - Tests of Nor
  - pYAP.YAP
  - Title
  - Stem-ar
  - Title
  - gro
  - gro
  - Normal
  - Title
  - gro
  - gro
  - Detrend
  - Title
  - gro
  - gro
  - Boxplot
- Log
- NPar Tests
  - Title
  - Notes
  - Active Dataset
  - Mann-Whitney Te
  - Ranks
  - Test Statistic
- Log
- Explore
  - Title
  - Notes
  - Active Dataset
  - group
  - Title
  - Case Proces

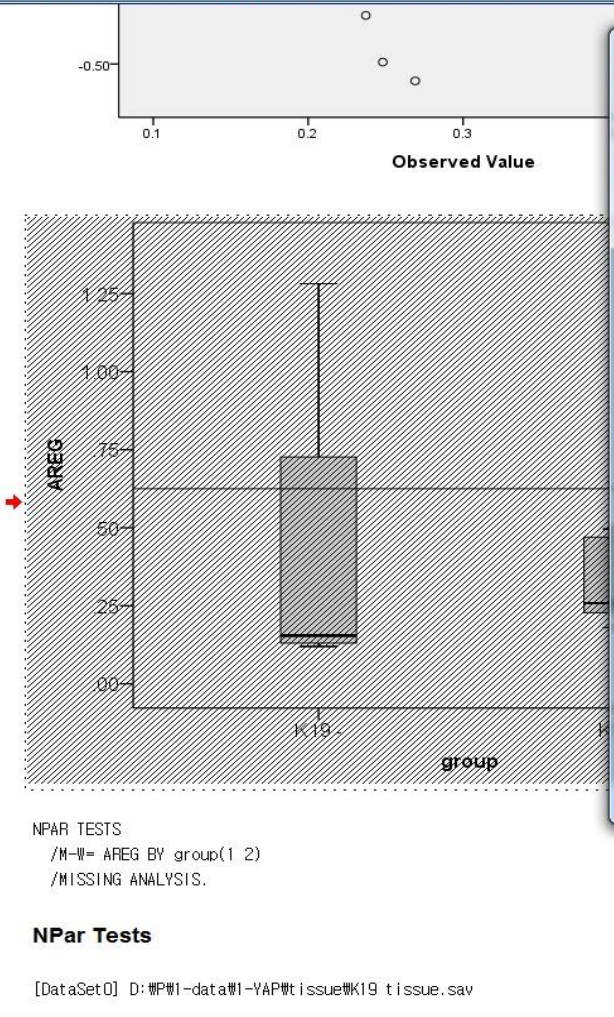


도표 편집기

파일(F) 편집(E) 보기(V) 옵션(O) 요소(M) 도움말(H)

arial 12 B I

AREG

group

K19- K19+

특성

최대화분석 설명 & 눈금 숫자 형식 **변수**

도표 크기 텍스트 유형

미리보기(V)

가나다 AaBbCc 123

글꼴

글꼴군(E): SansSerif 유형(O): 정규

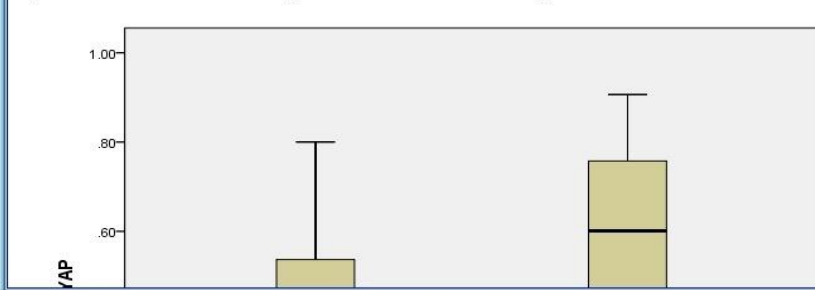
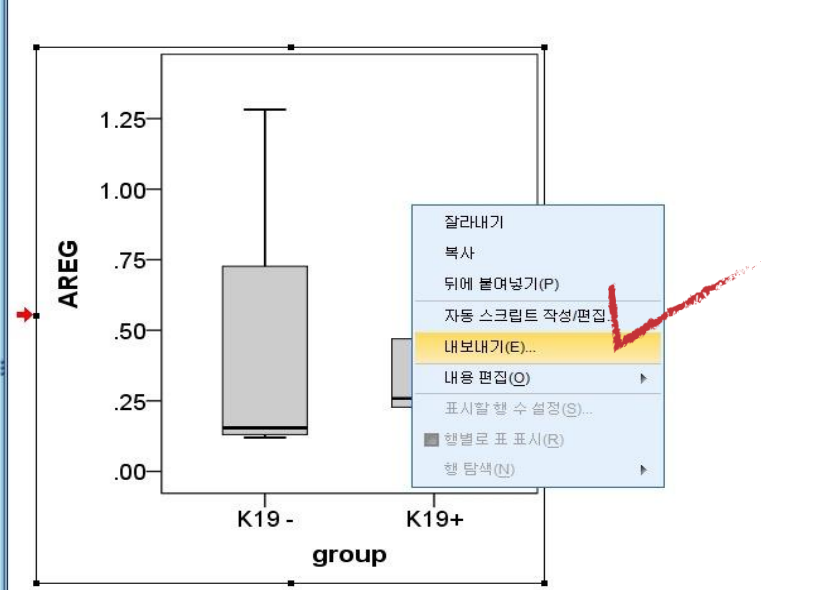
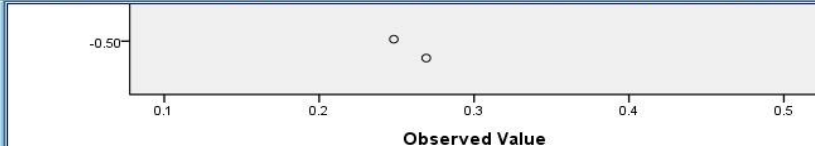
크기(S): 12 선택 크기(P): 12 최소 크기(M): 6

색상

■ 텍스트 색상(C)  
(0, 0, 0)

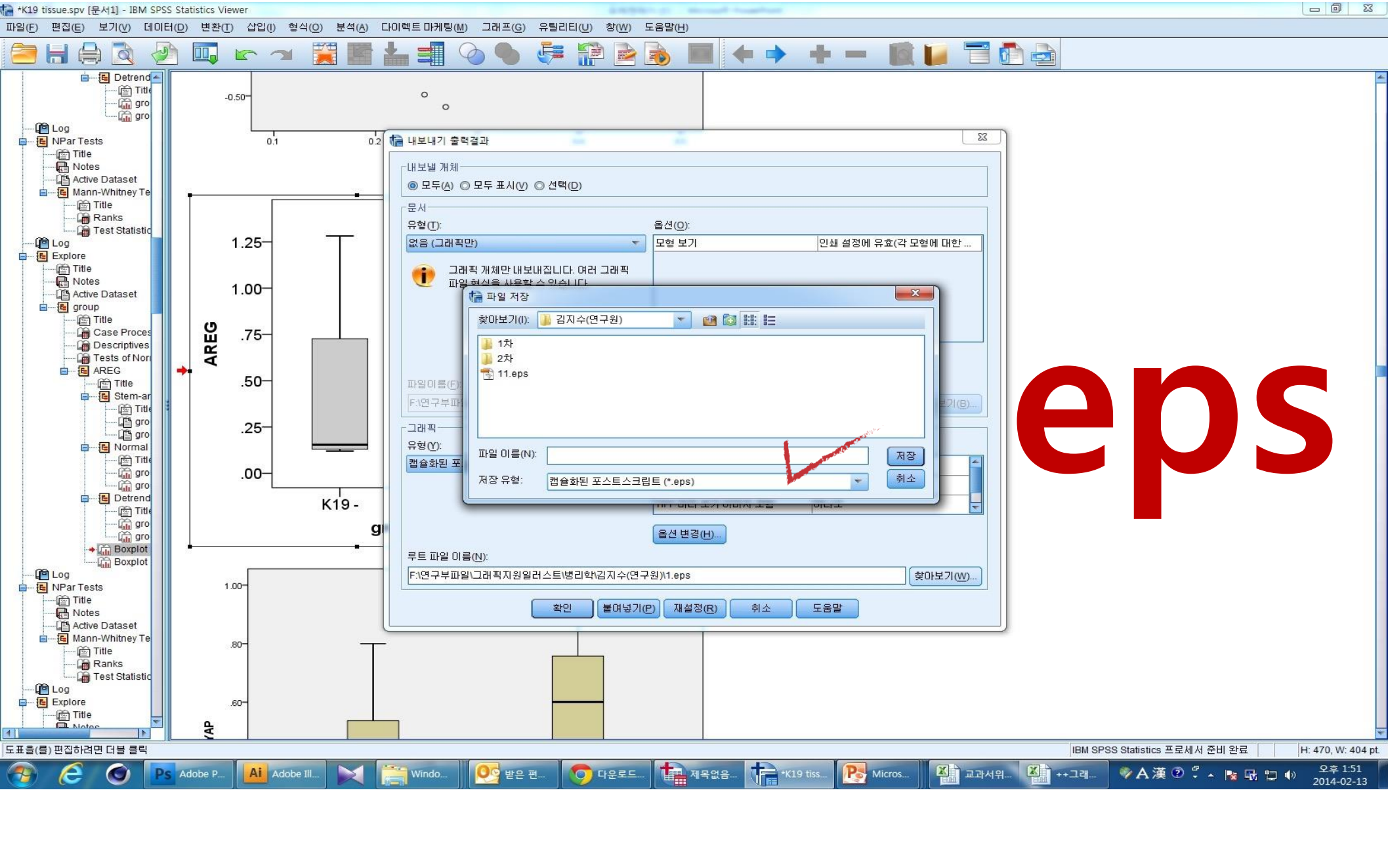
적용(A) 닫기 도움말(H)

- Detrend
  - Title
  - gro
  - gro
- Log
- NPar Tests
  - Title
  - Notes
  - Active Dataset
  - Mann-Whitney Te
    - Title
    - Ranks
    - Test Statistic
- Log
- Explore
  - Title
  - Notes
  - Active Dataset
  - group
    - Title
    - Case Proces
    - Descriptives
    - Tests of Nor
    - AREG
      - Title
      - Stem-ar
      - Title
      - gro
      - gro
      - Normal
      - Title
      - gro
      - gro
      - Detrend
        - Title
        - gro
        - gro
      - Boxplot
      - Boxplot

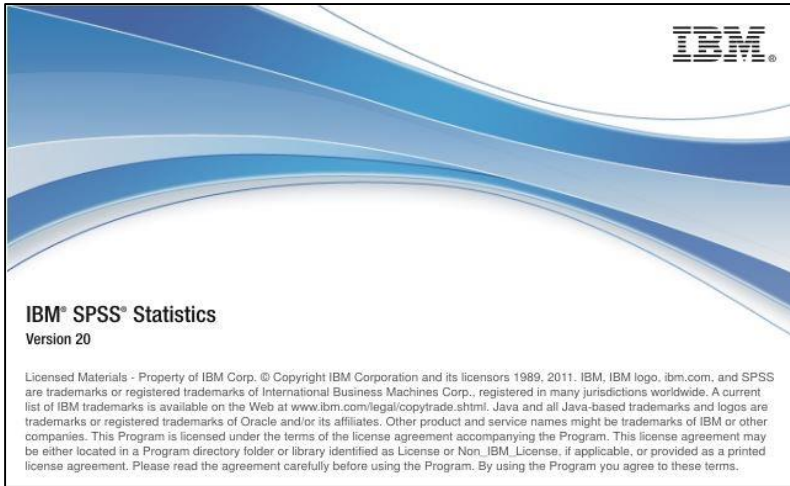
- Log
- NPar Tests
- Title
- Notes
- Active Dataset
- Mann-Whitney Te
  - Title
  - Ranks
  - Test Statistic
- Log
- Explore
- Title
- Notes




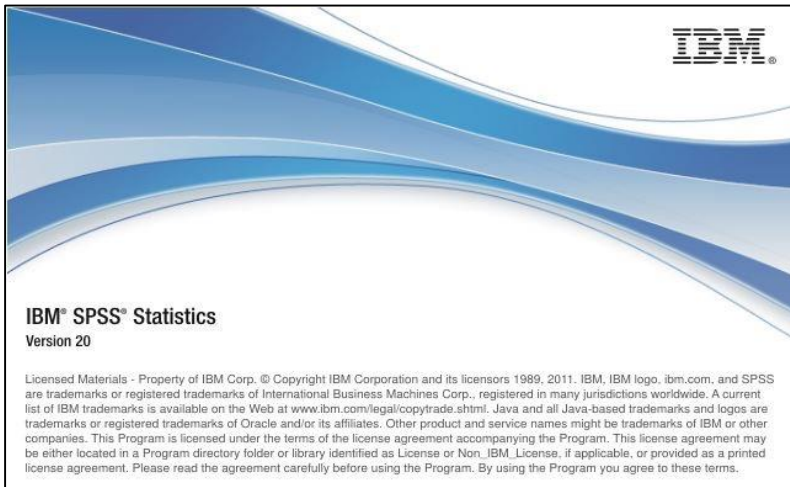




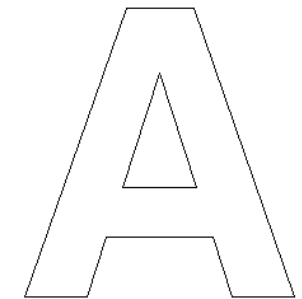
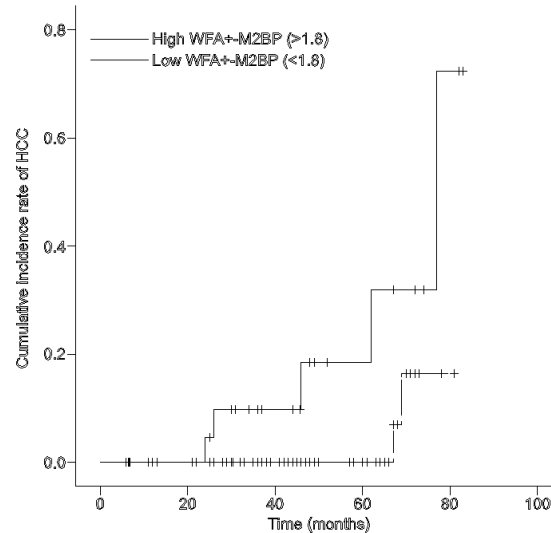
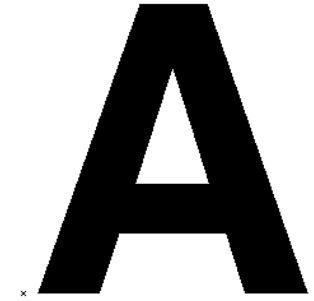
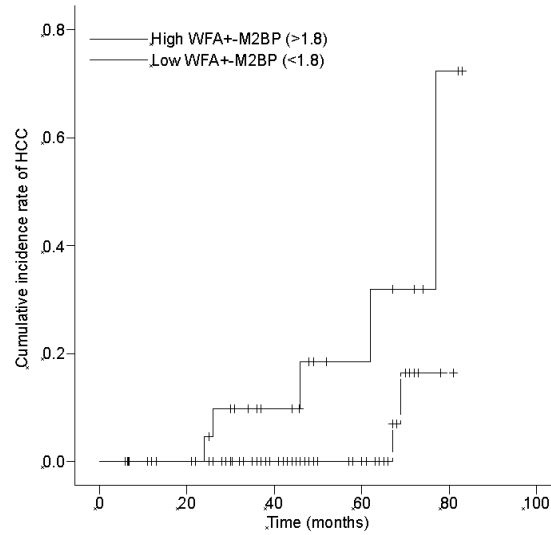
eps



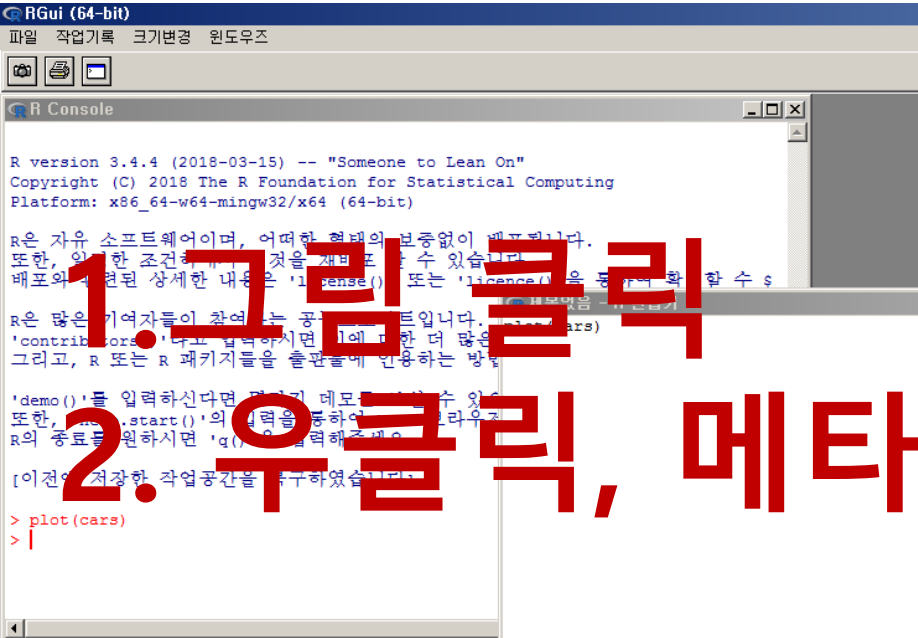
# Version 19



# Version 20



# R 그래프 추출하는 방법

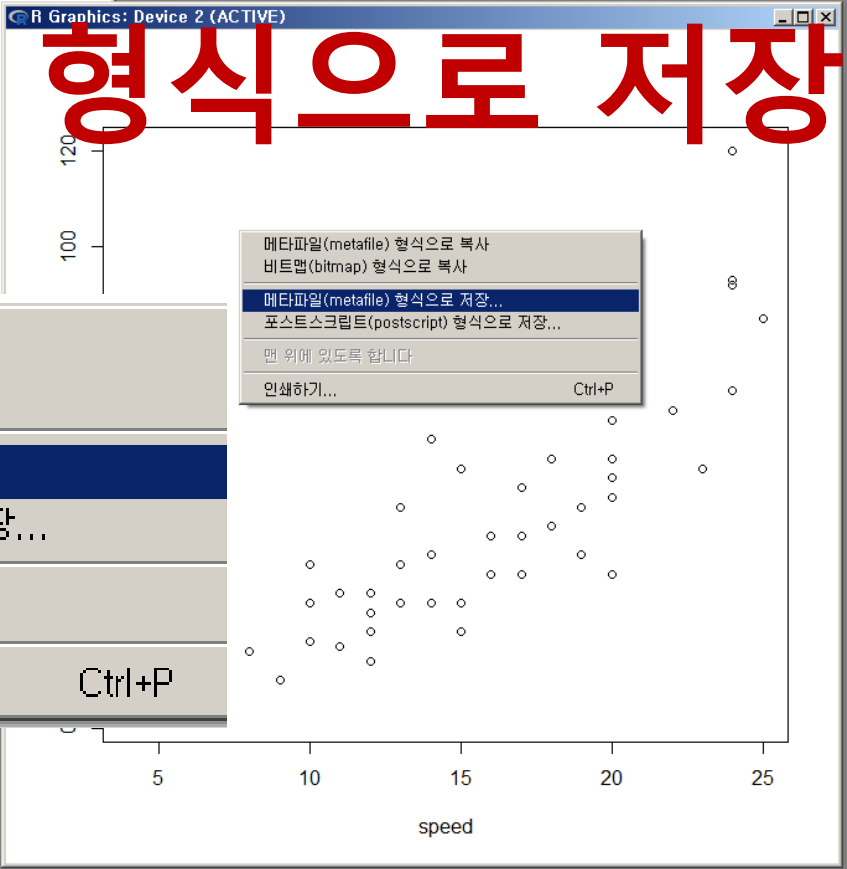


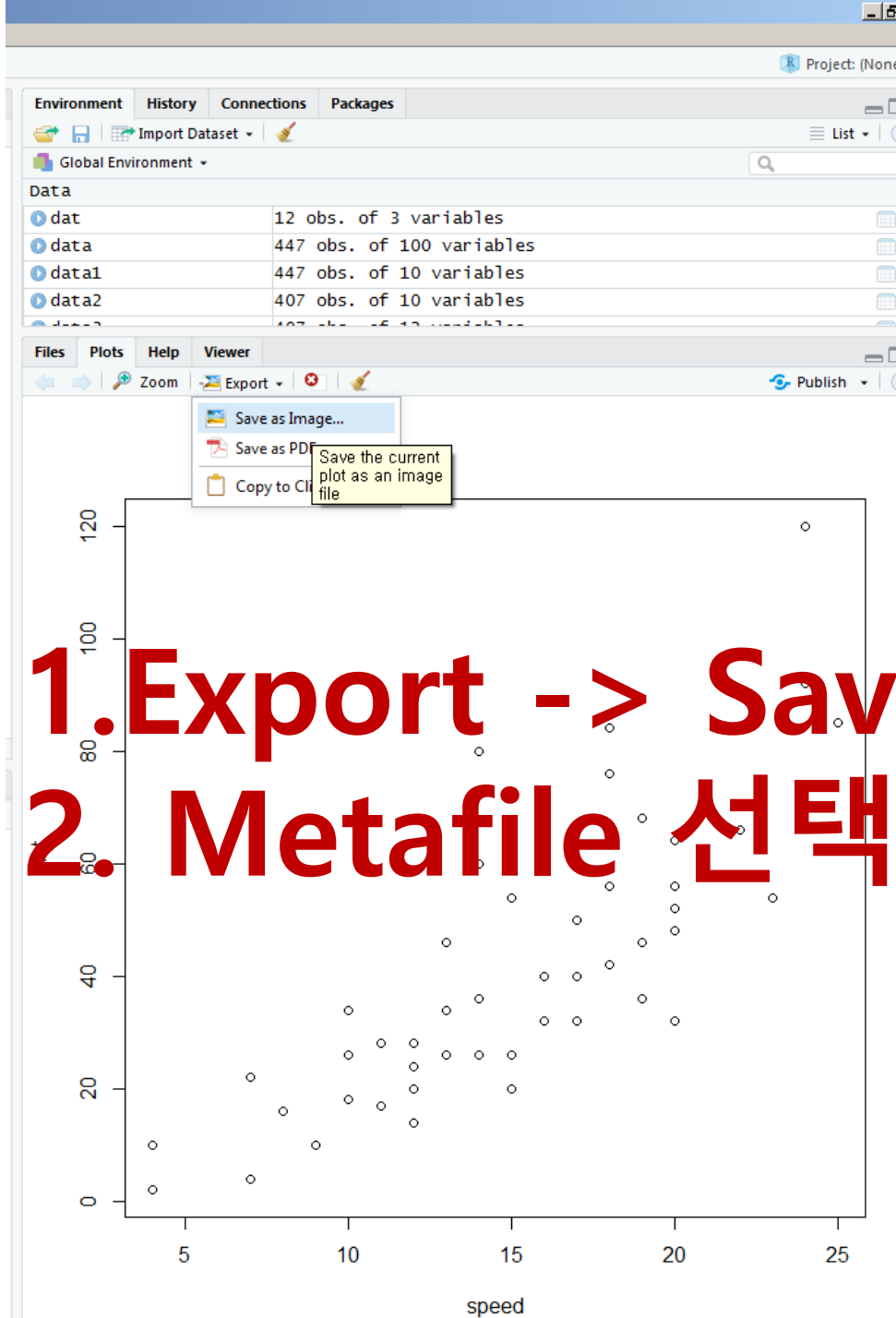
1. 그림 클릭

2. 우클릭, 메타파일

형식으로 저장

- 메타파일(metafile) 형식으로 복사
- 비트맵(bitmap) 형식으로 복사
- 메타파일(metafile) 형식으로 저장...**
- 포스트스크립트(postscript) 형식으로 저장...
- 맨 위에 있도록 합니다
- 인쇄하기... Ctrl+P

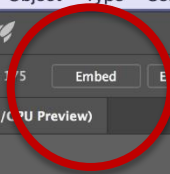
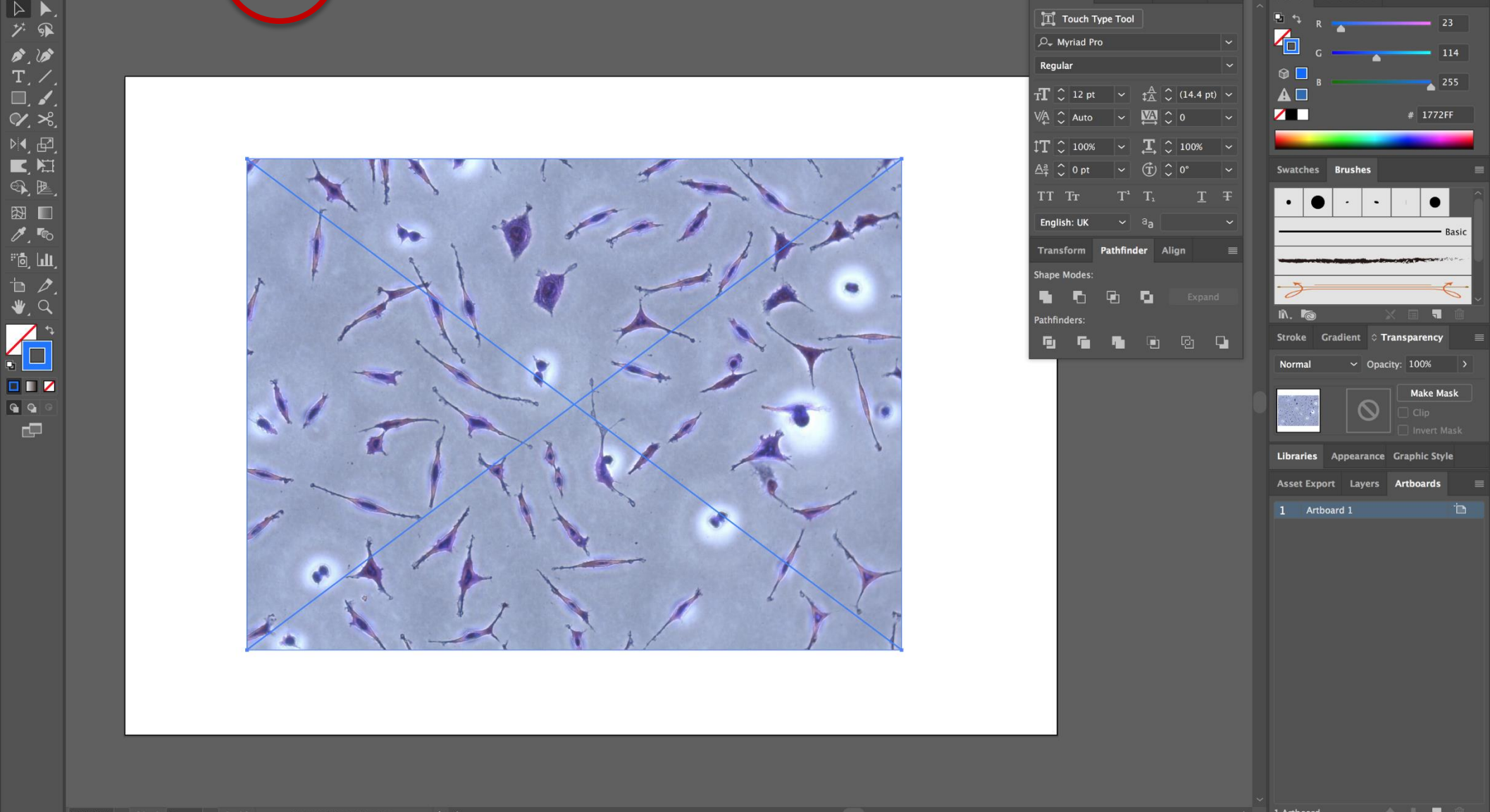




**1. Export -> Save as Image**  
**2. Metafile 선택!**



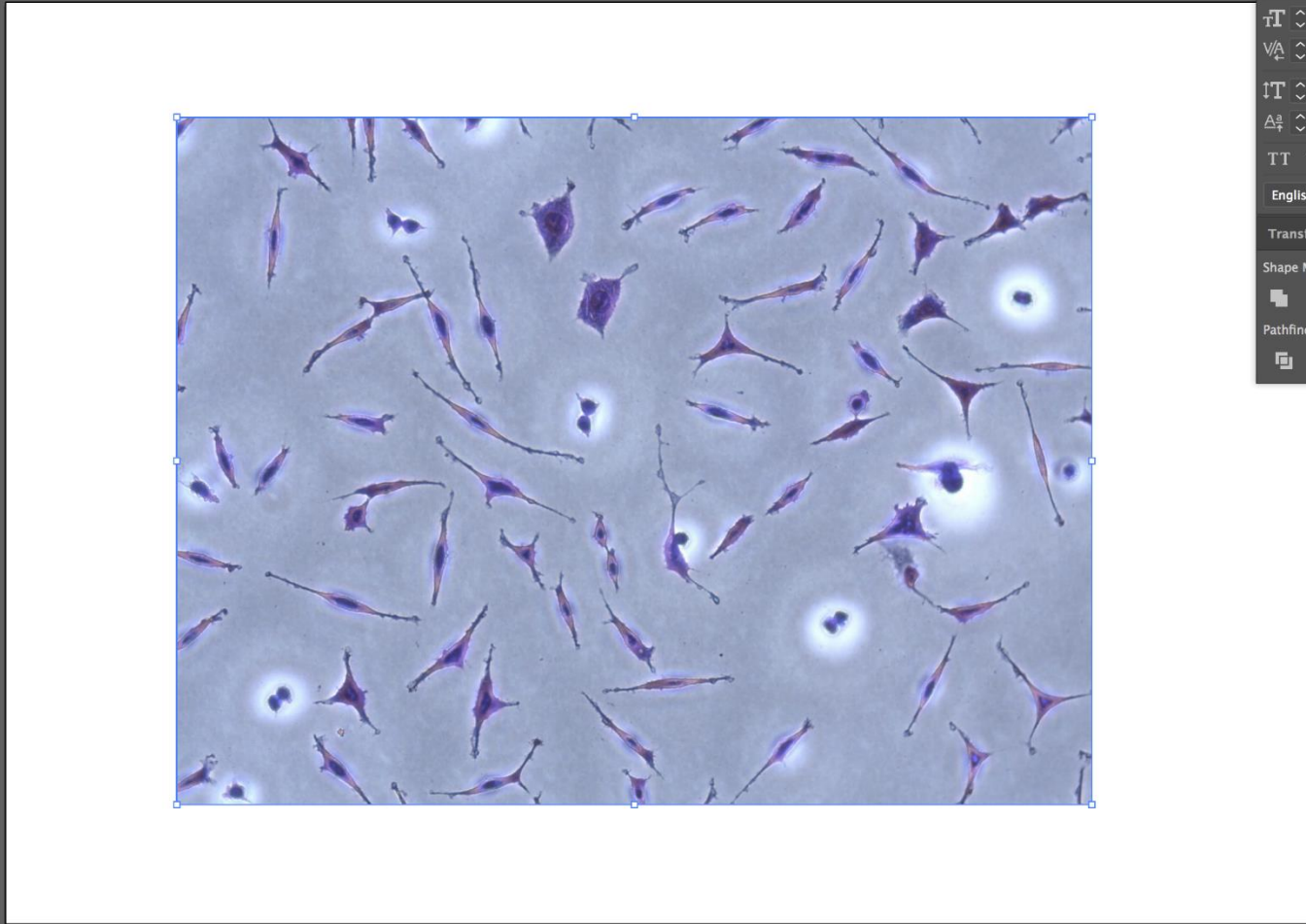




Character Paragraph OpenType Touch Type Tool Myriad Pro Regular 12 pt (14.4 pt) Auto 0 100% 100% 0 pt 0° English: UK Transform Pathfinder Align Shape Modes: Expand Pathfinders:

Color Color Guide R 23 G 114 B 255 # 1772FF Swatches Brushes Stroke Gradient Transparency Normal Opacity: 100% Make Mask Clip Invert Mask Libraries Appearance Graphic Style Asset Export Layers Artboards 1 Artboard 1





**Character** Paragraph OpenType

Touch Type Tool

Myriad Pro

Regular

12 pt (14.4 pt)

Auto 0

100% 100%

0 pt 0°

English: UK @a

Transform Pathfinder Align

Shape Modes: Expand

Pathfinders:

**Color** Color Guide

R G B #

Swatches Brushes

Basic

Stroke Gradient Transparency

Normal Opacity: 100%

Make Mask

Clip

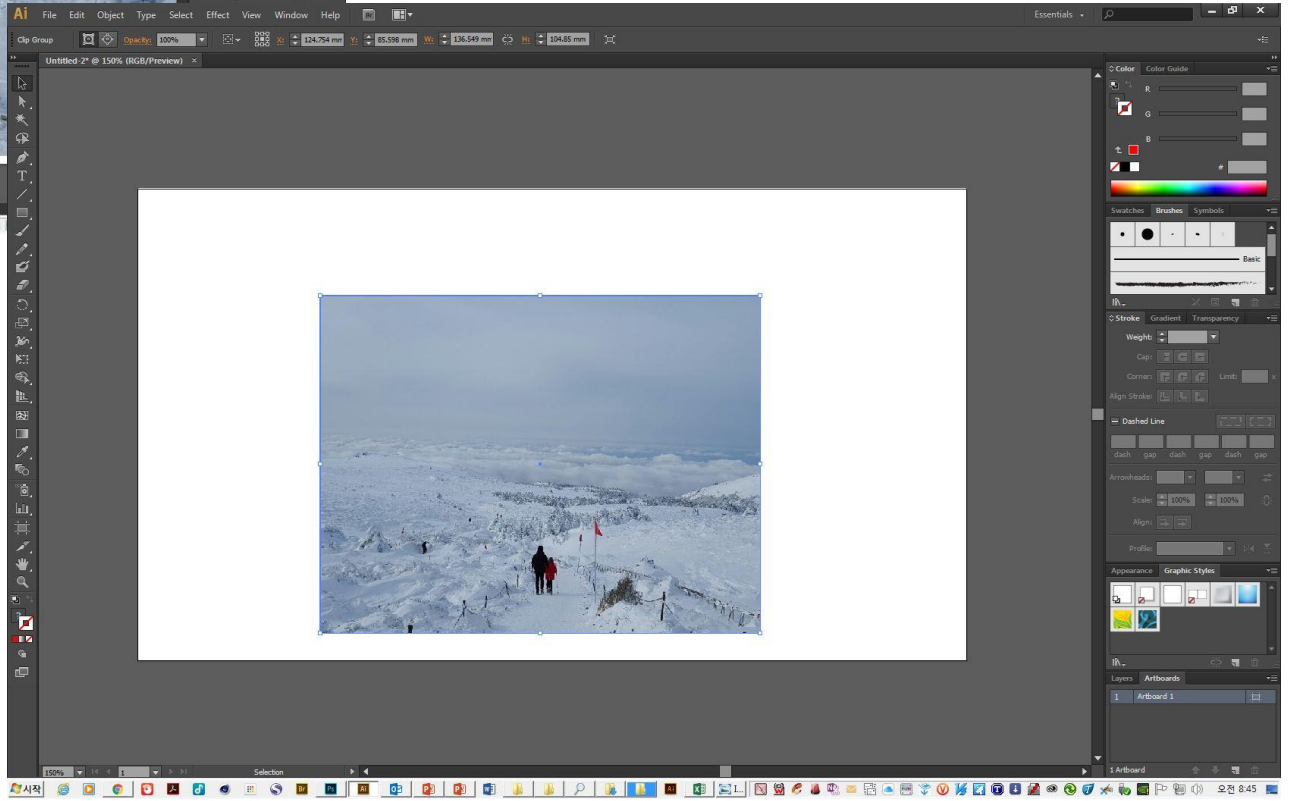
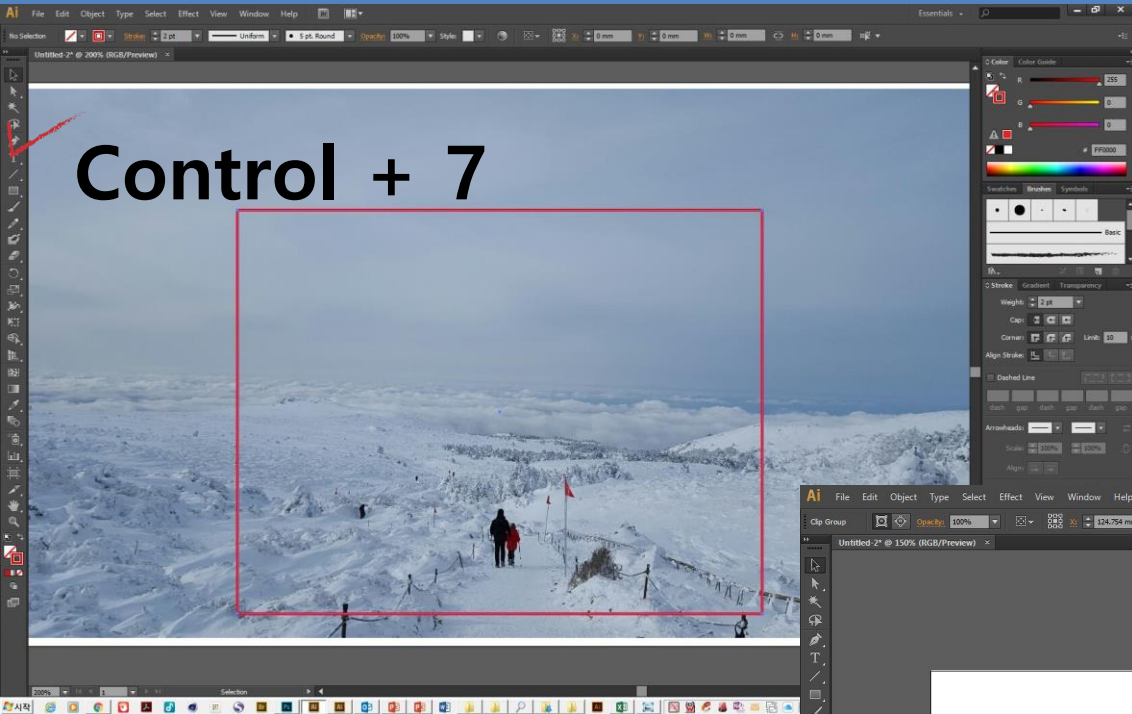
Invert Mask

Libraries Appearance Graphic Style

Asset Export Layers Artboards

1 Artboard 1


# Clipping Mask 기능 및 Align




- New Window
- Arrange
- Workspace
- Extensions
- Control
- Tools
- Actions
- Align** Shift+F7
- Appearance Shift+F6
- Artboards
- Attributes Ctrl+F11
- Brushes F5
- Color F6
- Color Guide Shift+F3
- Document Info
- Flattener Preview
- Gradient Ctrl+F9
- Graphic Styles Shift+F5
- Image Trace
- Info Ctrl+F8
- Layers F7
- Links
- Magic Wand
- Navigator
- Pathfinder Shift+Ctrl+F9
- Pattern Options
- Separations Preview
- Stroke Ctrl+F10
- SVG Interactivity
- Swatches
- Symbols Shift+Ctrl+F11
- Transform Shift+F8
- Transparency Shift+Ctrl+F10
- Type
- Variables
- Brush Libraries
- Graphic Style Libraries
- Swatch Libraries
- Symbol Libraries
- Untitled-3 @ 100% (RGB/Preview)

**Transform** **Align** **Pathfinder**


Align Objects:



Distribute Objects:



Distribute Spacing:

Align To: 

Color Color Guide

R: 35  
G: 31  
B: 32  
# 231F20

Transform Swatches Symbols

X: 0 in W: 0 in  
Y: 0 in H: 0 in  
∠: 0° ∠: 0°

Stroke Brushes Gradient Transparency

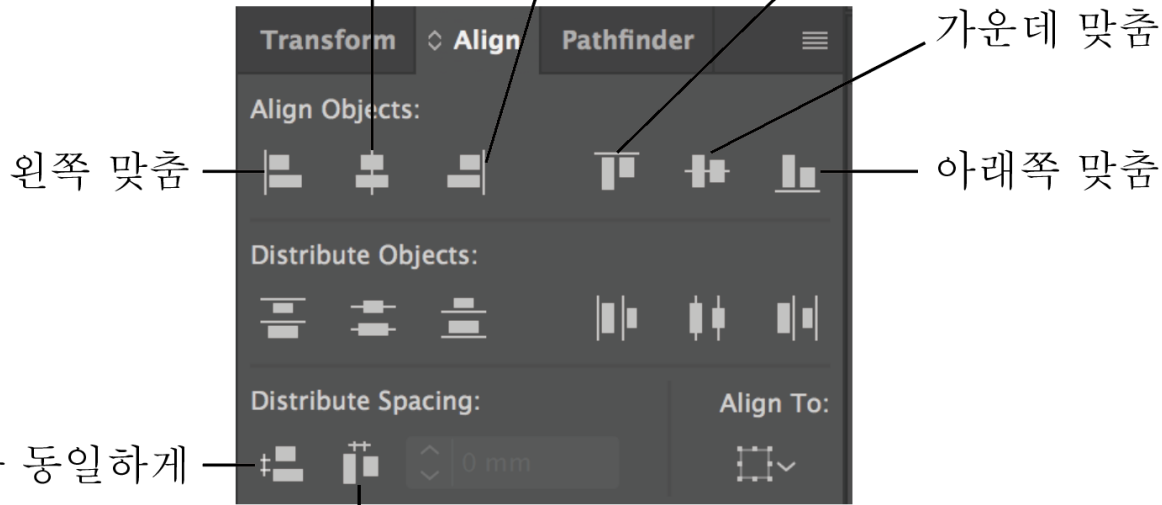
Appearance Graphic Styles

Layers Artboards

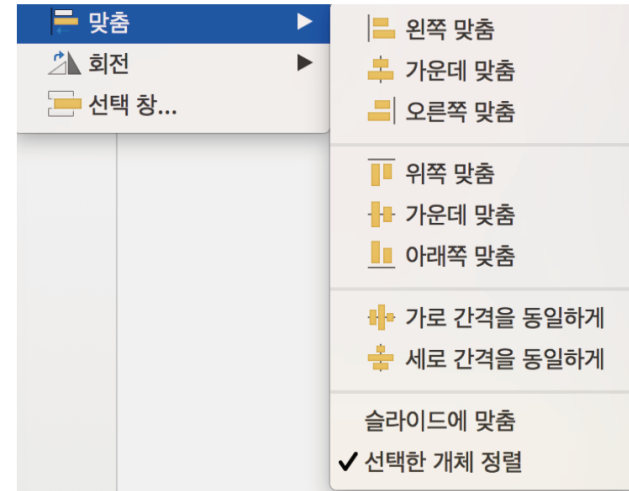
Layer 1

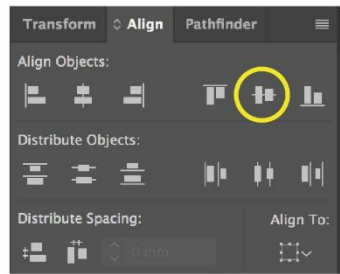
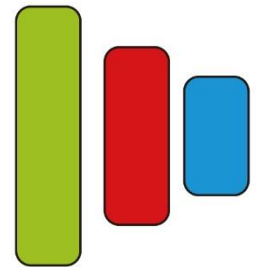
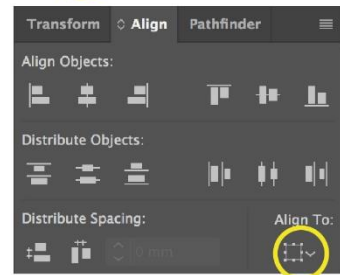
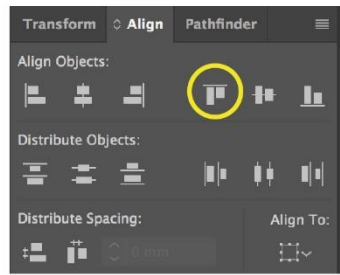
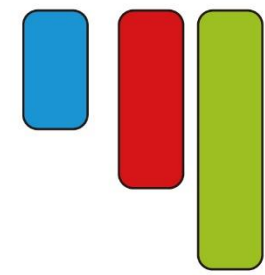
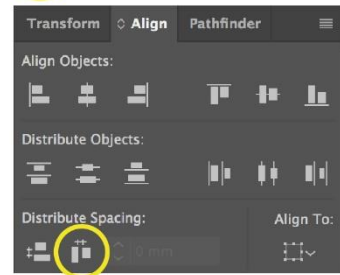
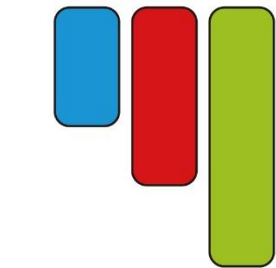
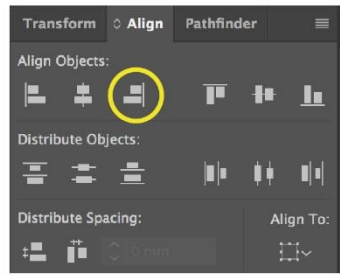
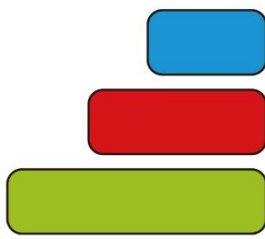
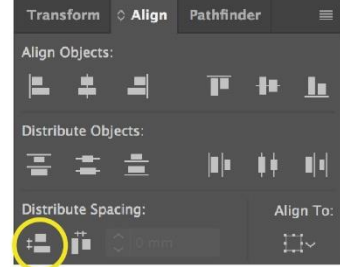
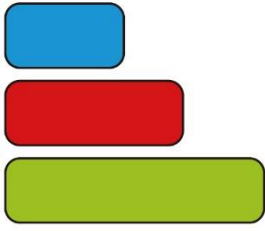
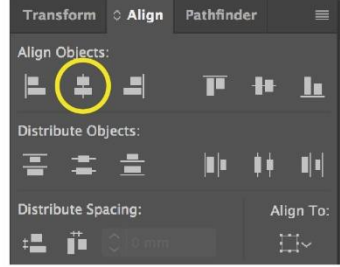
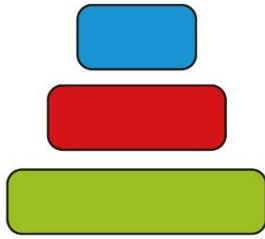
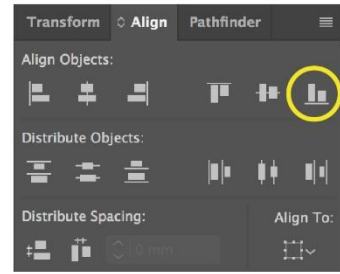
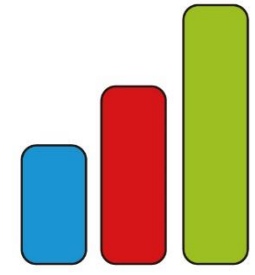
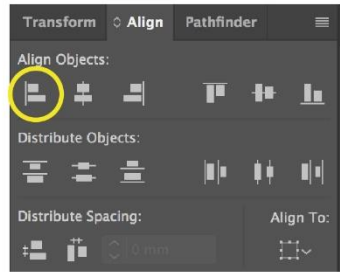
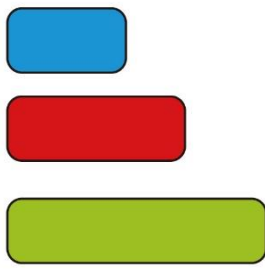


가운데 맞춤    오른쪽 맞춤    위쪽 맞춤



홈 → 정렬

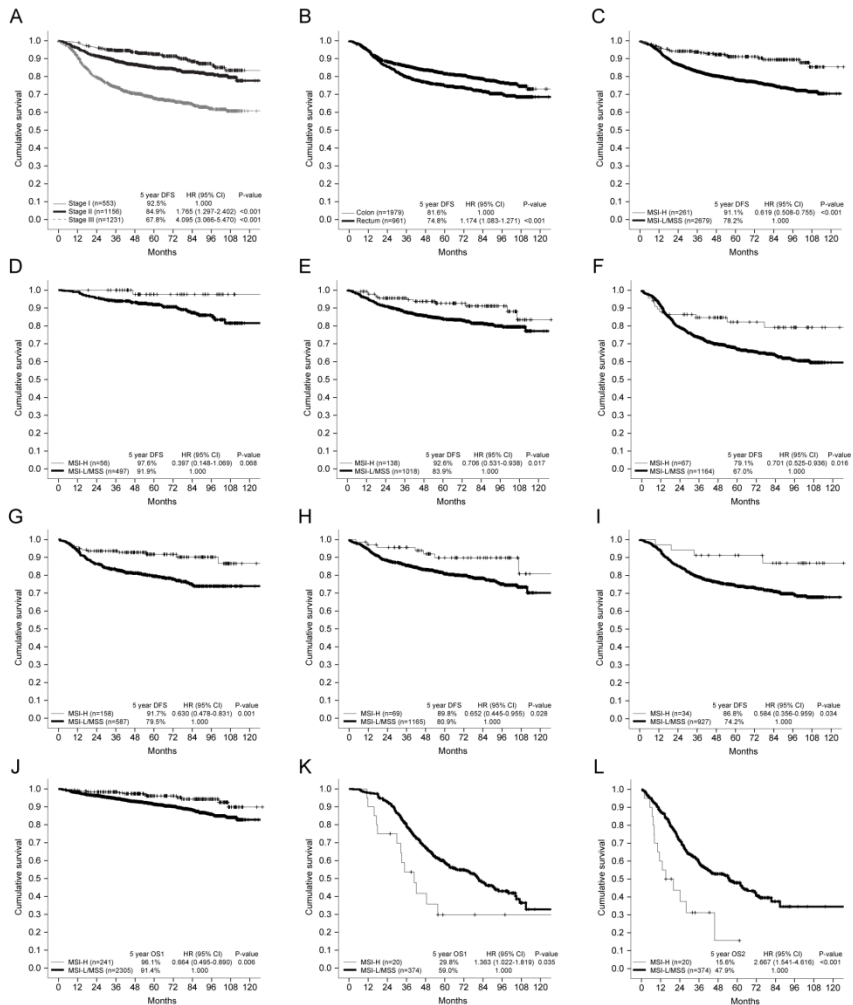




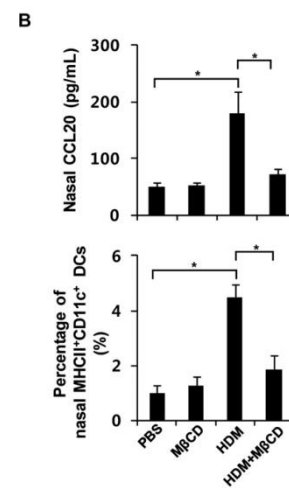
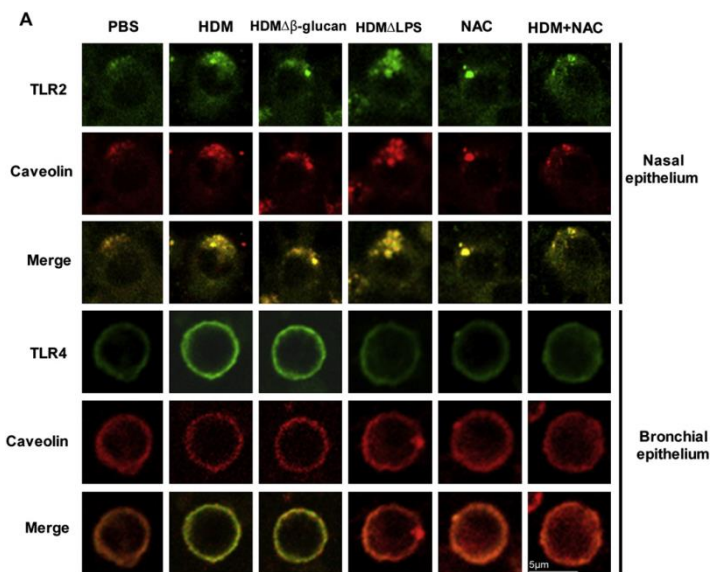


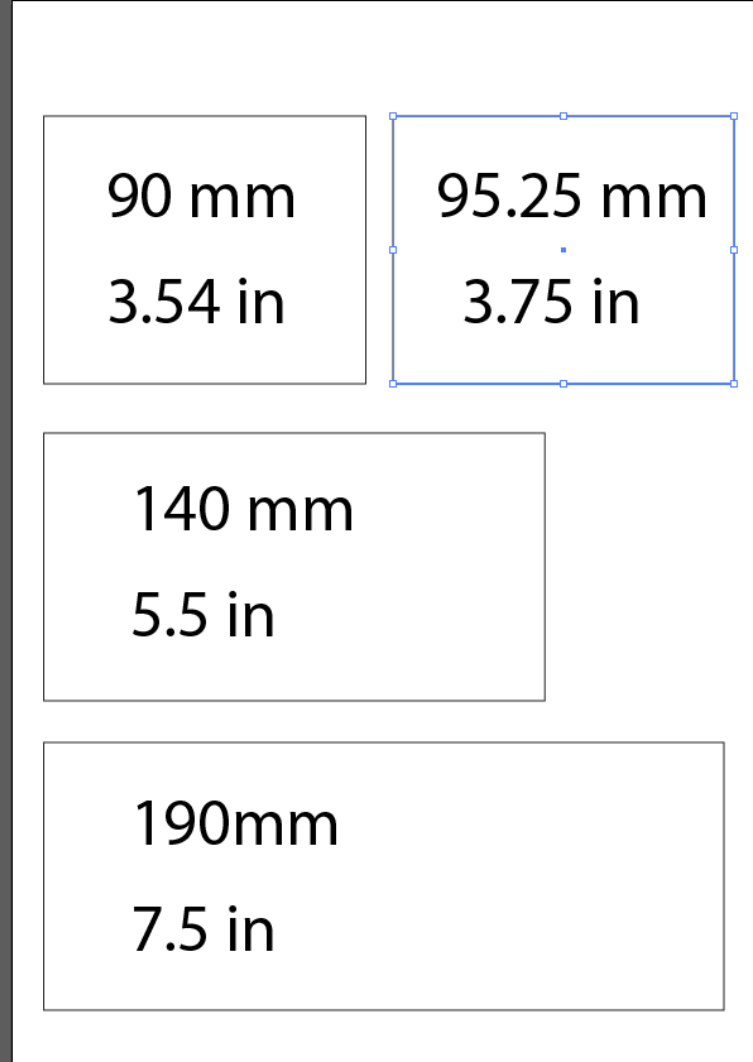
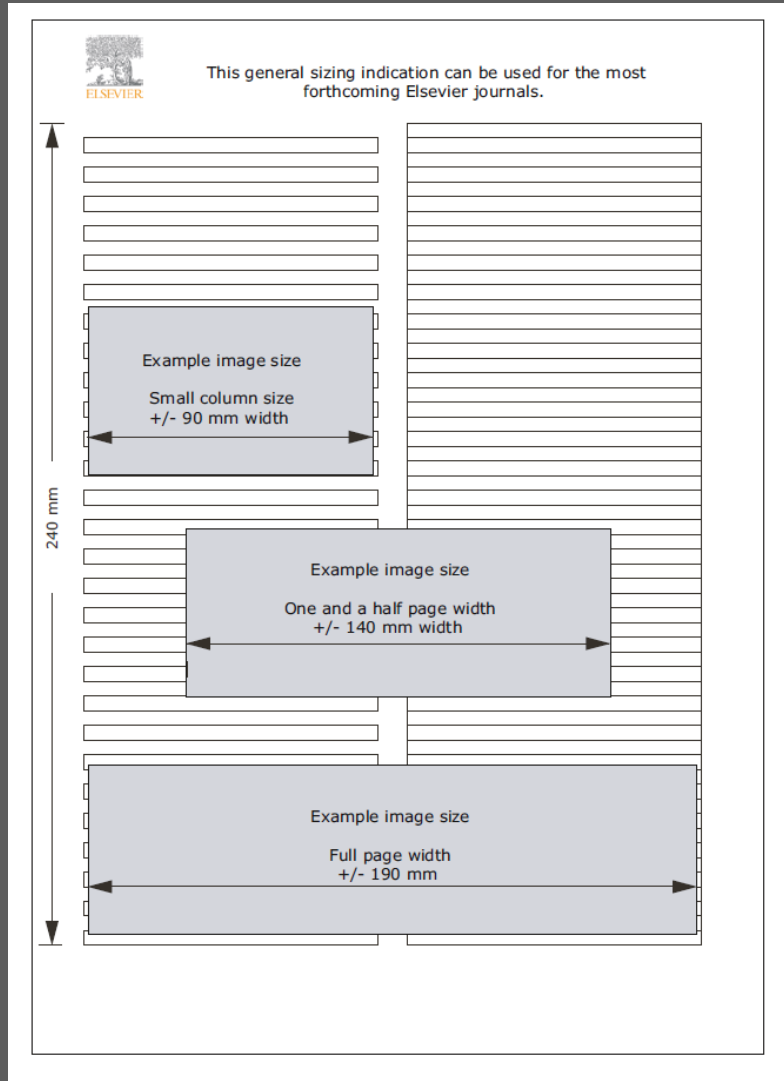


# A Type



# B Type





Color Color Guide

R 35  
G 31  
B 32  
# 231F20

Transform Swatches Symbols

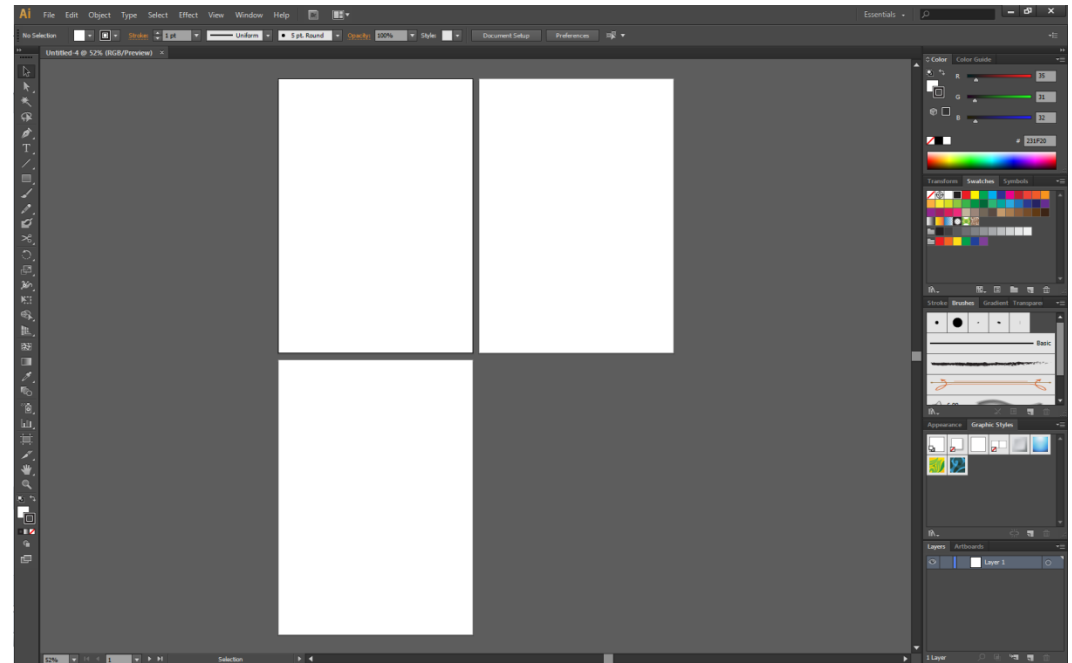
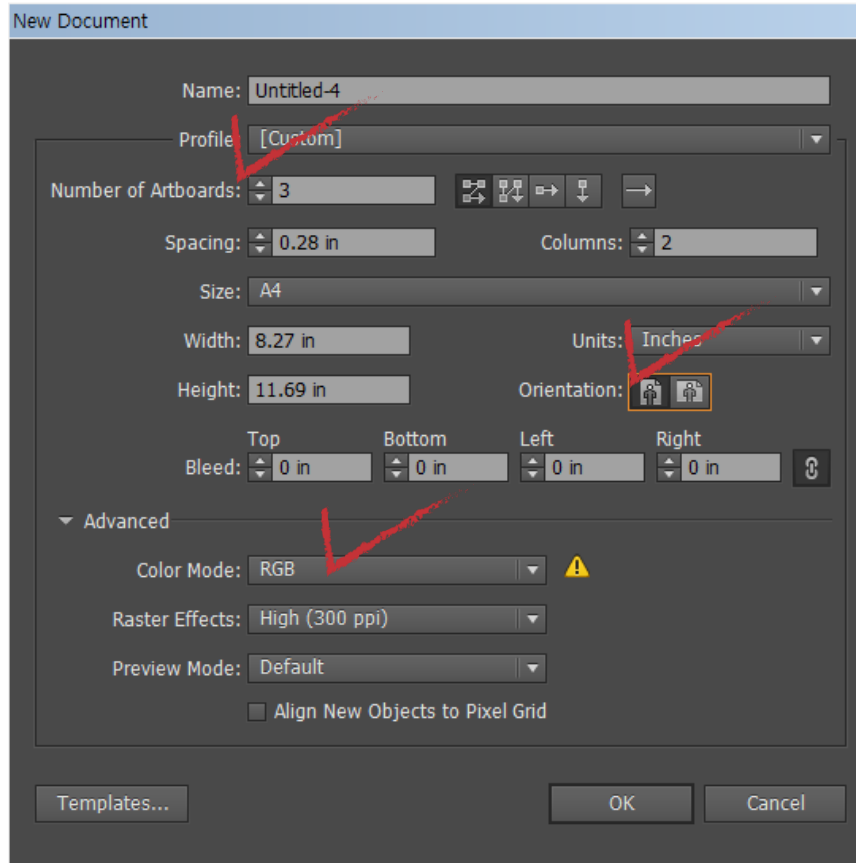
Stroke Brushes Gradient Transparei

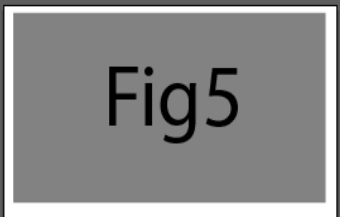
Appearance Graphic Styles

Layers Artboards

Layer 1

# Figure 크기와 논문형식에 맞춰 Artboards 크기조절





Character Paragraph OpenType

Myriad Pro Regular

12 pt (14.4 pt)

100% 100%

(0) 0

0% Auto Auto

0 pt 0°

English: USA Sharp

Transform Align Pathfinder

Align Objects:

Distribute Objects:

Distribute Spacing: 2 mm

Align To:

Color Color Guide

K 100 %

Swatches Brushes Symbols

Basic

Stroke Gradient Transparency

Weight:

Cap: [ ] [ ]

Corner: [ ] [ ] [ ] Limit: x

Align Stroke: [ ] [ ]

Dashed Line [ ] [ ]

dash gap dash gap dash gap

Arrowheads: [ ] [ ]

Scale: 100% 100%

Align: [ ] [ ]

Profiles: [ ]

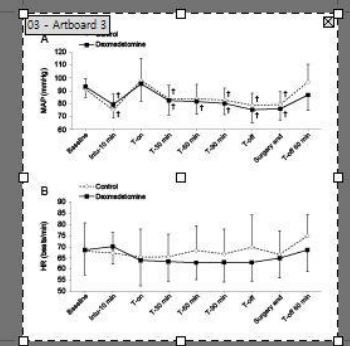
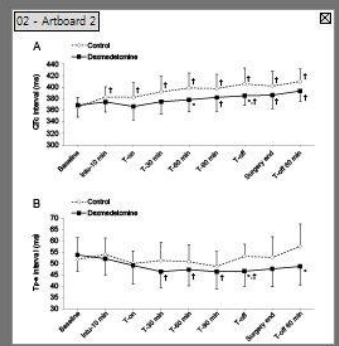
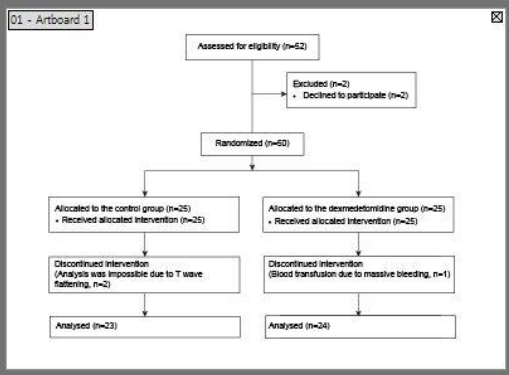
Layers Artboards Graphic 5 Appearance

1	Artboard 1	[ ]
2	Artboard 2	[ ]
3	Artboard 3	[ ]
4	Artboard 4	[ ]
5	Artboard 5	[ ]

5 Artboards

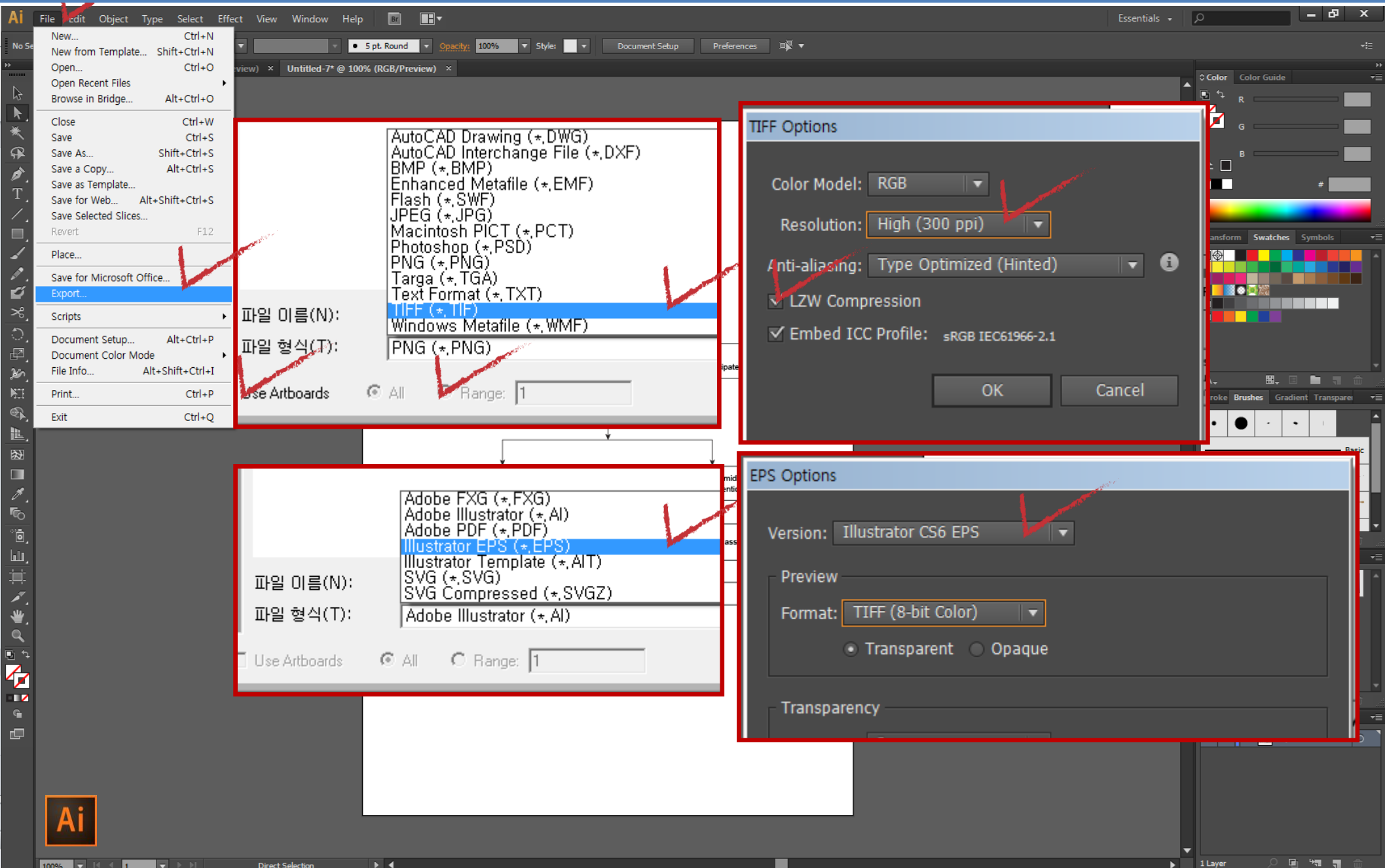


160206\_김나영\_김소연.ai\* @ 66.67% (RGB/Preview)



Color Color Guide R G B # Swatches Brushes Symbols Stroke Gradient Transparency Weight Cap Corner Limit Align Stroke Dashed Line Arrowheads Scale Align Profile Appearance Graphic Styles Layers Artboards

# Tiff, eps 또는 PDF 변환



- New... Ctrl+N
- New from Template... Shift+Ctrl+N
- Open... Ctrl+O
- Open Recent Files
- Browse in Bridge... Alt+Ctrl+O
- Close Ctrl+W
- Save Ctrl+S
- Save As... Shift+Ctrl+S
- Save a Copy... Alt+Ctrl+S
- Save as Template...
- Save for Web... Alt+Shift+Ctrl+S
- Save Selected Slices...
- Revert F12
- Place...
- Save for Microsoft Office...
- Export...
- Scripts
- Document Setup... Alt+Ctrl+P
- Document Color Mode
- File Info... Alt+Shift+Ctrl+I
- Print... Ctrl+P
- Exit Ctrl+Q

파일 이름(N):

파일 형식(T):

Use Artboards  All  Range: 1-3

Adobe FXG (\*.FXG)

Adobe Illustrator (\*.AI)

Adobe PDF (\*.PDF)

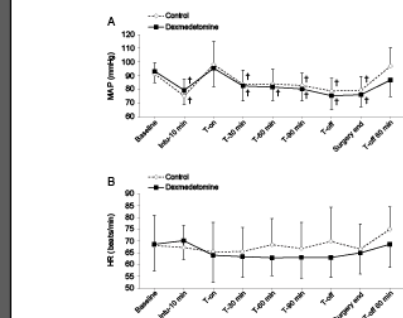
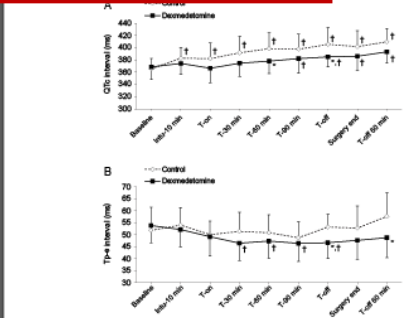
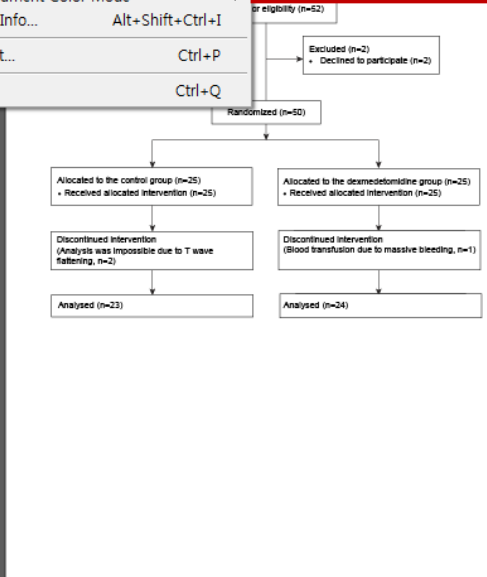
Illustrator EPS (\*.EPS)

Illustrator Template (\*.AIT)

SVG (\*.SVG)

SVG Compressed (\*.SVGZ)

Adobe Illustrator (\*.AI)



Color Color Guide

R 35

G 31

B 32

# 231F20

Transform Swatches Symbols

Stroke Brushes Gradient Transpare

Basic

Appearance Graphic Styles

Layers Artboards

Layer 1



PPT



PSD



Tiff



PPT 정리

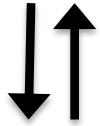
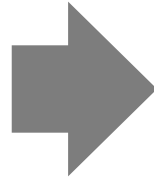


Tiff & eps

Eps, wmf,  
emf, 기타 파일 보관



Adobe Creative Cloud





# *Severance*

With the Love of God, Free Humankind from Disease and Suffering

