

The life of Journal of Stroke (JoS)

김종성

서울아산병원 신경과
Journal of Stroke 편집장

Journal of Stroke 연혁

- 1999년

국문학술지 첫 호 발행 (대한뇌졸중 학회지)

2011년 Koreamed 등재

2012년 한국연구재단 등재후보학술지

- 2013년

영문잡지로 전환

1호

2호

3호

2013년 12월 PMC 등재

- 2014년

4호

5호

2004년 8월 톰슨사에 e-mail로 submission

6호

2014년 10월 SCI(E) 등재


2016 년

Impact factor 4.795


(1) Journal 명 정하기

- 한국적 색채를 최소화하기
- 저널명 공고 및 투표

Stroke
Cerebrovasc Dis
Int J Stroke
J Stroke Cerebrovasc Dis

**대한뇌졸중학회**
Korean Stroke Society

대한뇌졸중학회 영문잡지 저널명 공모




Korean Stroke Society
Stroke

대한뇌졸중학회에서는 2013년 부터 영문잡지로 전환할 계획입니다. 이러한 위상에 걸맞는 논문의 이름이 중요하므로, 이에 회원님들께 새로 시작되는 대한뇌졸중학회 영문잡지의 이름을 공모하고자 합니다. 아래 후보 저널명 중 또는 새로운 이름을 건의해 주시면 선정된 분께 소정의 사례를 하고자 합니다.

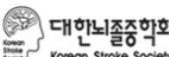
2012. 5.
영문대한뇌졸중학회지 편집위원 일동

▶ 영문잡지 저널명 추천하러 가기

※ 추천하신 영문학회지 이름이 선정된 분 중 추천하여 소정의 선물을 보내드릴 예정입니다.

**대한뇌졸중학회**
Korean Stroke Society

경기도 안양시 동안구 평촌동 896번지 한림대학교 성심병원 2층 신경과 (431-070)
사업자등록번호: 101-82-60739 대표자: 이병철
Tel : 050-2277-1919 Fax : 050-2277-2929 Email : stroke@stroke.or.kr
Copyright(C)2011 by Korean Stroke Society. All rights reserved.

**대한뇌졸중학회**
Korean Stroke Society

대한뇌졸중학회 영문잡지 저널명 공모

대한뇌졸중학회에서는 2013년 부터 영문잡지로 전환할 계획입니다. 이러한 위상에 걸맞는 논문의 이름이 중요하므로, 이에 회원님들께 새로 시작되는 대한뇌졸중학회 영문잡지의 이름을 공모하고자 합니다. 아래 후보 저널명 중 또는 새로운 이름을 건의해 주시면 선정된 분께 소정의 사례를 하고자 합니다.

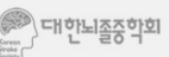
2012. 5.
영문대한뇌졸중학회지 편집위원 일동

» 후보 저널명

<input type="checkbox"/> 1. Journal of Stroke	<input type="checkbox"/> 2. Stroke research
<input type="checkbox"/> 3. Stroke Journal	<input type="checkbox"/> 4. Stroke Research and Care
<input type="checkbox"/> 5. Stroke Care and Investigation (SCI)	<input type="checkbox"/> 6. Stroke Care
<input type="checkbox"/> 7. Stroke & Vascular Neurology	<input type="checkbox"/> 8. Annals of Stroke
<input type="checkbox"/> 9. Brain and Vessel	
<input type="checkbox"/> 10. 기타 <input type="text"/>	

▶ 영문잡지 저널명 추천하기

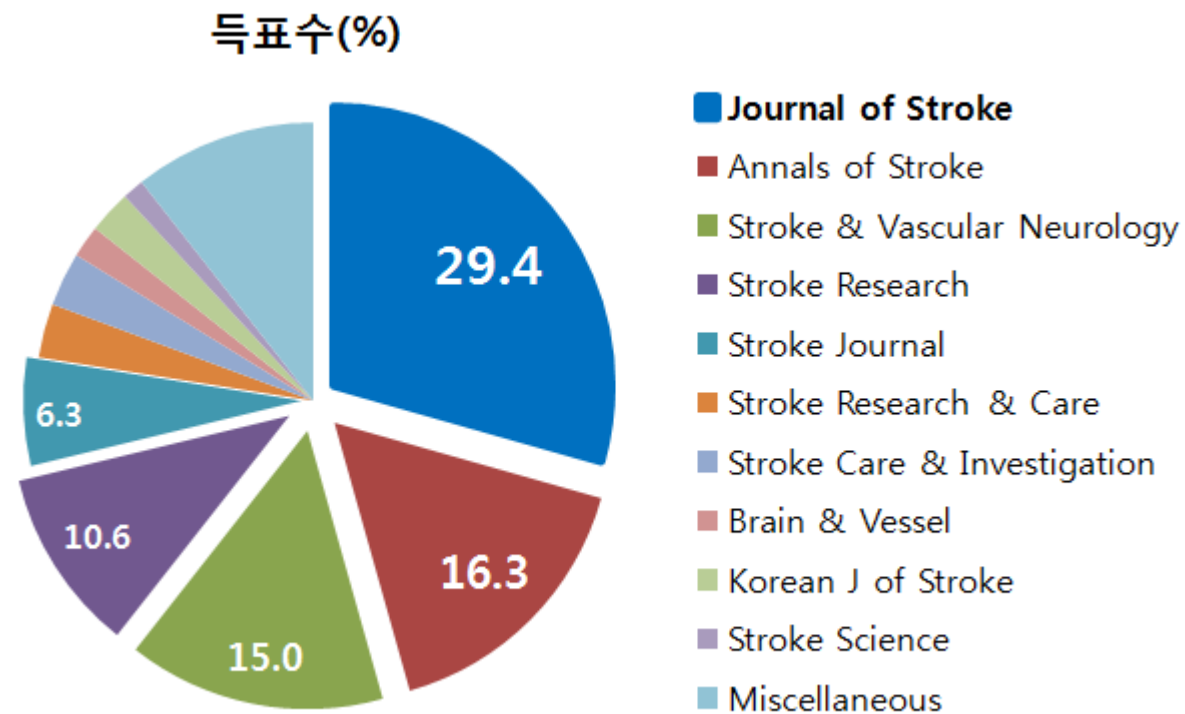
※ 추천하신 영문학회지 이름이 선정된 분 중 추천하여 소정의 선물을 보내드릴 예정입니다.

**대한뇌졸중학회**
Korean Stroke Society

경기도 안양시 동안구 평촌동 896번지 한림대학교 성심병원 2층 신경과 (431-070)
사업자등록번호: 101-82-60739 대표자: 이병철
Tel : 050-2277-1919 Fax : 050-2277-2929 Email : stroke@stroke.or.kr
Copyright(C)2011 by Korean Stroke Society. All rights reserved.

(1) Journal 명 정하기

- 저널명 공고 및 투표



(2) 저널 디자인 및 논문투고 시스템

JoS JOURNAL OF STROKE

[JOS](#) [Login](#) [Register](#) [Contact](#)

JoS
Online Manuscript Submission

If you are a first time user, please visit the journal home (www.j-stroke.org) and read the information before registering for an account. If you are an experienced user, please log in and proceed the steps. If you experience any problems, please email editor@j-stroke.org

LOGIN

ID (E-MAIL)


PASSWORD

☐ Remember my ID on this computer

LOGIN


[» Registration](#)

[» Forgot my password](#)



September, 2014 Vol. 16 No.3

- [» Instructions for Authors](#)
- [» Copyright Transfer Form](#)
- [» Endnote style download](#)
- [» How to submit a manuscript](#)
- [» checklist](#)
- [» Notice](#)



Copyright© by Korean Stroke Society. All right reserved.

Editorial Office
Department of Neurology, Asan Medical Center, Ulsan University College of Medicine, 88, Olympic-ro 43-gil, Songpa-gu, Seoul, 138-736, Korea
TEL : +82-50-2277-1919 FAX : +82-50-2277-2929 E-mail : editor@j-stroke.org Powered by M2community

(2) 저널 디자인 및 논문투고 시스템

저널 디자인의 경우 PMC 등재에 있어 매우 중요하나, SCI 등재에 있어서 결정적이지 않음.

투고 시스템의 경우 톰슨 로이터에서 Scholar One을 권고하나 장단점이 있음.
(비용은 유사)

	장점	단점
국내회사 (M2 communication)	신속한 수정/보안	일부 (특히 해외저자) 낯선 시스템에 대한 의견
Scholar one system	Web of Science Data와 연계되는 유일한 Manuscript Submission System으로, 제출된 Manuscripts 의 Reviewer 검색을 위해 Web of Science에서 검색할 수 있음	다른 시스템을 이용하고 있는 경우, 또는 독자적 시스템을 원하는 경우, flexibility의 제한

(3) 수준 높은 논문 유치 및 IF 고려

- Review article >> Original article
- Case report → Letter to editor
 - Letter to editor 는 SCI IF 에 calculated 되지 않으므로 IF 에 영향이 없음

과총지원금

학회지원금 (학술진흥기금)

광고 자제 (SCI되기 전에는 상업화 잡지와 차별화 필요성)

SCI 등재를 위한 노력들

- 조언
한림대 허선 교수 (과편협 교육연구위원장)
한국지사 톰슨로이터 노재환 상무
- Aim and Scope
- Editorial board
- Thompson Reuter
 - 발행 매 호를 5부씩 발행시마다 발송
- Submission form (online, E-mail)

SCI 등재 신청 중요 요구사항 확인

1. TIMELINESS - To measure timeliness we need to see three consecutive current issues, one after another, as soon as they are published. (충족)
2. INTERNATIONAL EDITORIAL CONVENTIONS - Thomson Reuters also determines if the journal follows international editorial conventions, which are intended to optimize retrievability of source articles. (충족)
3. FULL TEXT ENGLISH - Thomson Reuters focuses on journals that publish full text in English, or at very least, bibliographic information in English. (충족)
4. PEER REVIEW - Application of the peer-review process is another indication of journal standards and signifies overall quality of the research presented and the completeness of cited references. (충족)
5. EDITORIAL CONTENT - Scientific research continues to give rise to specialized fields of studies, and new journals emerge as published research on new topics achieves critical mass. (충족)
6. INTERNATIONAL DIVERSITY- Thomson Reuters editors look for international diversity among the journal's contributing authors, editors, and editorial advisory board members. (총 – 부분 충족 21편 중 7편[33%]가 해외저자임)
7. REGIONAL JOURNALS - Citation analyses may also play a different role in the evaluation of regional journals whose citation impact is usually modest. (충족)
8. CITATION ANALYSIS
 - (1) Analysts examine the citation record of the contributing authors and editorial board members. (충족)
 - (2) Significant deviation from this normal rate, however, prompts an examination by Thomson Reuters to determine if excessive self-citations are being used to artificially inflate the impact factor. (주의 요함)
 - (3) If we determine that self-citations are being used improperly, the journal's impact factor will be suppressed for at least two years and the journal may be considered for de-selection from Web of Science. (주의 요함)

SCI 전략

- SCI application form은 기준 양식이 없어 자유롭게 작성 후 제출 (Text-word, ppt file모두 가능)-vivid, 눈에 띄게
- 신생 Journal 일 경우 편집위원장, 부편집위원장, 국외 및 국내 Editor board member들의 다양한 경력이 중요 (경력사항을 table로, *가산점 부여)
- 정시에 발행되고 있는가 (예를 들어 1월 31일 발행 시 2월 중순에는 도착해야 함, *JoS는 발행시마다 SCI 필라델피아 미국지사로 발송)
- Journal의 전체적인 design.
- 논문 저자가 End note를 활용하였는가.
- 편리한 투고홈페이지시스템을 갖추고 있는가. (톰슨 로이터에서 개발한 Scholar One 추천)
- 논문의 질(내용)이 어떠한가.(국제적으로 Stroke 분야에서 학술적으로 어떤 영향을 미치고 있는가, Global Standard)
- 신생저널의 경우 SCI 가 되어야 할 당위성을 부각시켜야 함

SCI 전략 (continue)

- 1년에 SCI에 신청하는 journal이 2000개가 넘기 때문에 자세히 review를 할 수 없는 상태임.
 - 전략적인 준비가 필요- 내용 및 presentation skill.
- SCI는 현재 등재된 학술지를 토대로 상위 10%를 유지하려 하므로 등재에 있어 분명한 강점이나 사유가 있다고 판단할 경우에만 등재 시킴
- 현재 JOS의 경쟁상대가 어느 저널인가를 파악하는 것이 중요.
 - 현재 SCI에 등재된 stroke 학술지들과 비교하여 심사되므로 타 학술지들과 차별 점이 있는 편이 유리.

(1) Aim and Scope

- Timing – “차별화된 Aim/scope” vs. “I.F. >2”
- 우선 try 해보기로
- Aim and scope 정비
아시아 뇌졸중의 중요성 및 이를 다루지
않으므로 생기는 문제를 부각
- Editorial member and boards

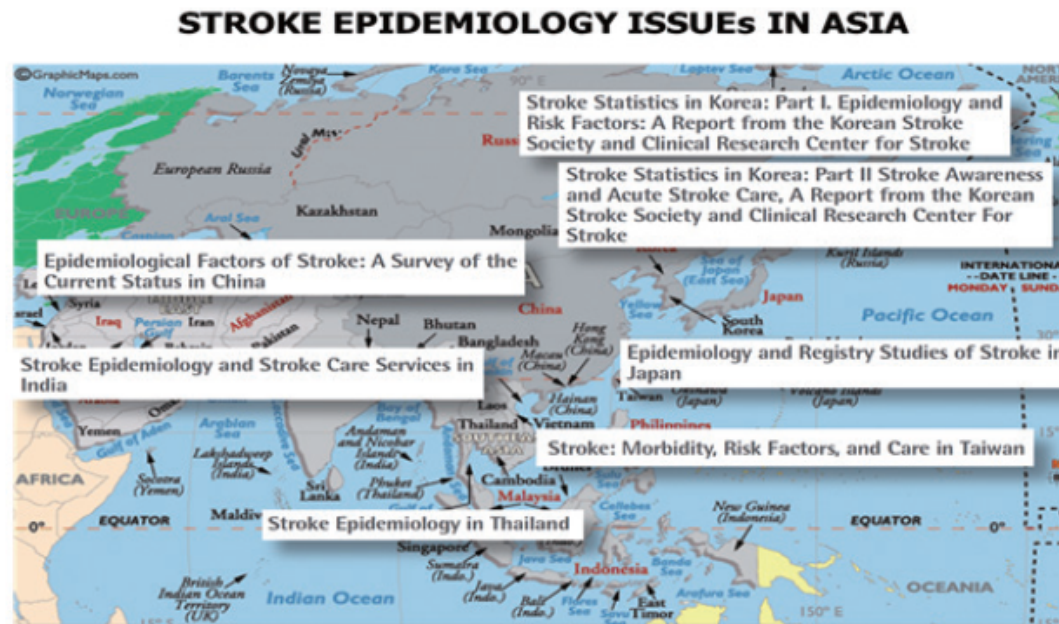
(2) Editorial board

- 훌륭한 editor들을 모셔 오고, 이를 적극적으로 홍보하는 것이 중요
 - 해외 학회 chair 또는 editor
 - Editor's publication performance

INTERNATIONAL BOARD		
Louis R. Caplan Boston, USA 	Consulting Editor <i>Stroke</i> Editorial Board <i>Cerebrovascular Diseases</i>	More than 60 books More than 350 peer-reviewed SCI research papers or reviews An officer on committees for the American Heart Association, the American Academy of Neurology, and the American Neurological Association
Pierre Amarenco Paris, France 	Associate Editor <i>Stroke</i>	125 books or book chapters More than 260 peer-reviewed SCI research papers or reviews Director of the European Stroke Organization
Geoffrey A. Donnan Melbourne, Australia 	Editor-in-Chief <i>International Journal of Stroke</i>	More than 60 books or chapters More than 400 peer-reviewed SCI research papers and reviews The former president of the World Stroke Organization and director of the National Stroke Research Institute
Philip B. Gorelick Grand Rapids, USA 	Section Editor <i>Stroke</i>	More than 210 peer-reviewed SCI research papers or reviews
Eng Lo Boston, USA 	Associate Editor <i>Stroke</i> Editorial Board <i>Cerebrovascular Diseases</i>	More than 220 peer-reviewed SCI research papers or reviews
Peter D. Schellinger Minden, Germany 	Editorial Board <i>Stroke</i>	3 books and more than 40 book chapters More than 160 peer-reviewed SCI research papers or reviews Director of the European Stroke Organization
Ayrton Massaro Sao Paulo, Brazil 	Associate Editor <i>International Journal of Stroke</i>	More than 70 peer-reviewed SCI research papers or reviews
Steven Warach Dallas, USA 	Editorial Board <i>Stroke</i> <i>Cerebrovascular Diseases</i> <i>International Journal of Stroke</i>	More than 200 peer-reviewed SCI research papers or reviews

(3) Series

1. Stroke epidemiology
2. Stroke registry
3. Small vessel disease
4. Intracranial atherosclerosis



(3) Series

1. Stroke epidemiology
2. Stroke registry
3. **Small vessel disease**
4. Intracranial atherosclerosis



Submission of the brand new
Journal of Stroke
for journal evaluation
in the Web of Science™
Core Collection

To the Chief Evaluator at Thomson Reuters:

On behalf of the editorial members of the *Journal of Stroke (JOS)*, I respectfully send our registration proposal for inclusion in the Science Citation Index as managed by Thomson Reuters.

The *JOS* is a new journal devoted to stroke research, providing stroke clinicians and researchers with peer-reviewed articles on clinical and basic investigation of cerebral circulation to enhance patient management, education, and clinical and experimental research.

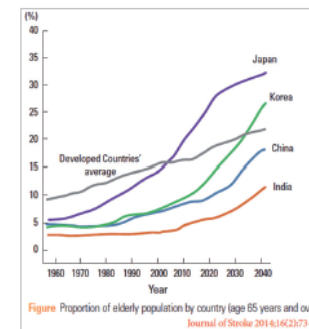
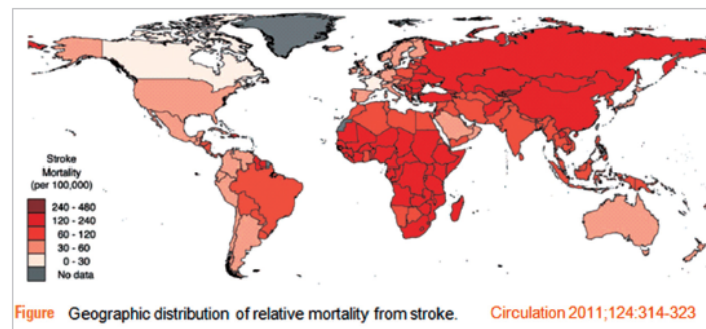
The *JOS* is unique in that we have a particular interest in stroke in Asia, where the stroke burden is enormous. Increasing stroke incidence along with a rapidly aging population in this region will further increase this burden, which will eventually shrink economies and destabilize societies, not only in Asia, but also in other parts of the world. Additionally, stroke etiology and characteristics differ between Asians and non-Asians, with intracranial atherosclerosis, small vessel diseases, moyamoya disease or hemorrhagic strokes more common in Asians and extracranial atherosclerosis less common, making it necessary for treatment and prevention strategies to differ. However, thus far, Asia-specific stroke issues have been neglected and under-represented in existing stroke journals.

Our key mission is to publish on Asia-specific stroke issues in an effort to reduce the stroke burden in Asia and associated problems worldwide. Our editorial team has substantial experience in stroke research and editorial work, and the editorial board consists of renowned global experts, including those with a particular interest in Asian issues. With these excellent and collaborative members, we believe that we can accomplish our mission. Already, the *JOS* has attracted interest from stroke researchers from around the world who are submitting their papers to us.

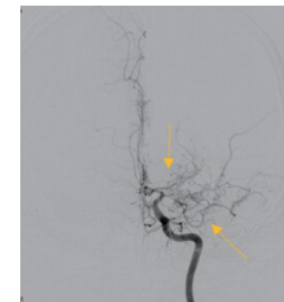
WHY JOURNAL OF STROKE SHOULD BE SCI-REGISTERED?

IMPORTANCE OF STROKE IN ASIA

Stroke is a leading cause of death worldwide, and one of the most important causes of disability in elder persons. Stroke is particularly serious in Asia; its mortality is higher in Asia than in Europe or North America (see left figure below), and higher than that of ischemic heart disease in East Asia. With Asians accounting for 60% of the world's population, a rapid increase in the elder population (see right figure below) and very high prevalence of stroke in countries such as China, Japan, Korea, India, and Pakistan will exert an even greater devastating burden on Asia, which will eventually shrink economies and destabilize societies, not only in Asia, but also in other parts of the world.



Besides the importance of stroke in itself, Asians have different stroke etiologies and mechanisms, and the strategies for its management and prevention should differ in this respect. For example, intracranial atherosclerosis, Moyamoya disease, and intracranial hemorrhages are more prevalent in Asia (see the right figure) while extracranial atherosclerosis is less common than in other parts of the world.



A patient with Moyamoya disease

THE NEED FOR A JOURNAL FOCUSING ON STROKE IN ASIA



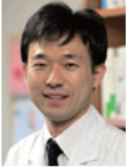
To reduce the enormous burden of stroke in this region, research on Asian issues should be more actively published. In the last decade, there has been a conspicuous increase in the Asian contribution to the scientific literature (*Stroke* 2012;43:830-7). However, Asian issues have still been poorly represented in existing journals devoted to stroke research, such as *Stroke*, *Cerebrovascular Diseases*, and *International Journal of Stroke*. Because we are part of the editorial team of these journals, we understand that study results from Asia are more often rejected than those from Europe or North America. A recent analysis of the *Stroke* journal database showed that the acceptance rate of submissions from Asian countries was less than one third compared to that of the average rate (*Stroke* 2013;44:2644-9).

One of the important reasons for this is that Western editors are unfamiliar with or uninterested in Asian issues. Another reason is that the manuscripts from Asia do not reach the required standard of English. Therefore, despite significant health problems, stroke issues in Asia have been under-represented. Although the *JOS* is interested in every aspect of stroke, the main mission of the *JOS* is to represent Asian issues more actively so that we can contribute to reducing the stroke burden in the region.

In addition, we would like to correct the unbalanced literature caused by underrepresentation of Asian issues. A large portion of humanity is Asian, and this bias in coverage distorts scientific conclusions that may lead to erroneous conclusions among thought leaders in the prevention and treatment of stroke. As described above, intracranial atherosclerosis, a dominant cause of stroke among Asians and Blacks, differs from extracranial atherosclerosis in terms of risk factors, stroke mechanisms and ways of treatment. Given the huge population of Asians and Blacks (more than 70% of world population), we believe that intracranial atherosclerosis is the most important cause of stroke globally (*Kim JS, Caplan LR, Wong KS, Intracranial Atherosclerosis, Wiley-Blackwell, 2008*). However, the literature description of risk factors, mechanisms and treatments are significantly biased toward extracranial atherosclerosis, reflecting the experiences of Western stroke practitioners. The same is true for other stroke characteristics: a high prevalence of cerebral small arterial disease and the proneness to bleeding during the use of antithrombotics in Asian populations. The biased literature should be corrected by publishing Asian stroke issues more actively.

EDITORS AND EDITORIAL BOARD OF THE JOURNAL OF STROKE

Our editorial team has significant experience in stroke research and editorial work. The editorial board of the *JOS* consists of renowned global experts, and includes those who are particularly interested in Asian issues, such as Professor Caplan, Professor Gorelick, Professor Wong, and Professor Liu (see table below).

CHIEF EDITOR	Editorial activity	Publications and other activities
Jong S. Kim † Seoul, Korea 	Associate Editor <i>Cerebrovascular Diseases</i> <i>International Journal of Stroke</i> <i>Journal of Stroke and Cerebrovascular Diseases</i> <i>Journal of Korean Medical Association</i> Editorial Board <i>Stroke</i> <i>Neurocritical Care</i> International Editor <i>Neurology</i> Founding Editor <i>Journal of Clinical Neurology</i>	22 books or book chapters 281 peer-reviewed SCI research paper or reviews Organizer of the 3rd International Conference of Intracranial Atherosclerosis
ASSOCIATE EDITORS		
Oh Young Bang † Seoul, Korea 	Assistant Editor <i>Stroke</i> Associate Editor <i>Journal Clinical Neurology</i> Editorial Board <i>Experiment Neurobiology</i>	6 books or book chapters 140 peer-reviewed SCI research papers or reviews
Dong Wha Kang † Seoul, Korea 		5 books or book chapters 135 peer-reviewed SCI research papers

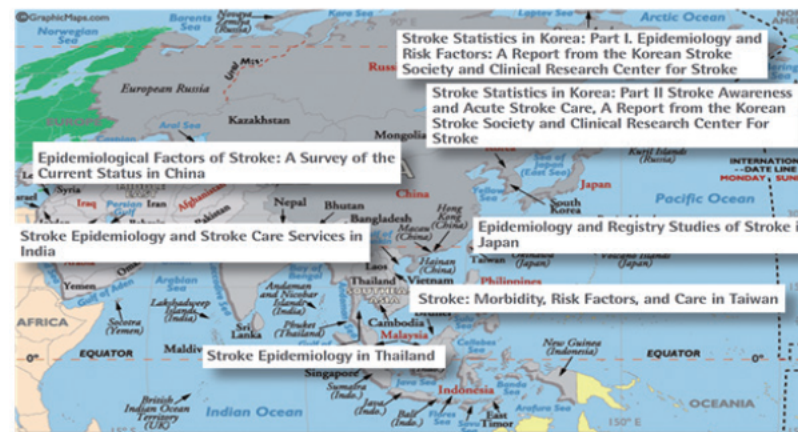
INTERNATIONAL BOARD		
Louis R. Caplan Boston, USA 	Consulting Editor <i>Stroke</i> Editorial Board <i>Cerebrovascular Diseases</i>	More than 60 books More than 350 peer-reviewed SCI research papers or reviews An officer on committees for the American Heart Association, the American Academy of Neurology, and the American Neurological Association
Pierre Amarenco Paris, France 	Associate Editor <i>Stroke</i>	125 books or book chapters More than 260 peer-reviewed SCI research papers or reviews Director of the European Stroke Organization
Geoffrey A. Donnan Melbourne, Australia 	Editor-in-Chief <i>International Journal of Stroke</i>	More than 60 books or chapters More than 400 peer-reviewed SCI research papers and reviews The former president of the World Stroke Organization and director of the National Stroke Research Institute
Philip B. Gorelick Grand Rapids, USA 	Section Editor <i>Stroke</i>	More than 210 peer-reviewed SCI research papers or reviews
Eng Lo Boston, USA 	Associate Editor <i>Stroke</i> Editorial Board <i>Cerebrovascular Diseases</i>	More than 220 peer-reviewed SCI research papers or reviews
Peter D. Schellinger Minden, Germany 	Editorial Board <i>Stroke</i>	3 books and more than 40 book chapters More than 160 peer-reviewed SCI research papers or reviews Director of the European Stroke Organization
Ayrton Massaro Sao Paulo, Brazil 	Associate Editor <i>International Journal of Stroke</i>	More than 70 peer-reviewed SCI research papers or reviews
Steven Warach Dallas, USA 	Editorial Board <i>Stroke</i> <i>Cerebrovascular Diseases</i> <i>International Journal of Stroke</i>	More than 200 peer-reviewed SCI research papers or reviews

ASIAN BOARD		
KS Lawrence Wong Hong Kong, China 	Associate Editor <i>Stroke</i> Editorial Board <i>Cerebrovascular Diseases</i> <i>International Journal of Stroke</i>	More than 240 peer-reviewed SCI research papers or reviews Secretary of the World Stroke Organization Organizer of the 1st International Conference on Intracranial Atherosclerosis
Kazunori Toyoda Osaka, Japan 	Assistant Editor <i>Stroke</i> Editorial Board <i>Cerebrovascular Diseases</i>	More than 160 peer-reviewed SCI research papers or reviews
Liping Liu Beijing, China 	Editorial Board <i>Stroke</i>	More than 60 peer-reviewed SCI research papers or reviews Vice-organizer of the International Conference on Intracranial Atherosclerosis 2014
Jeyaraj Durai Pandian Ludhiana, Punjab, India 	Editorial Board <i>International Journal of Stroke</i>	More than 50 peer-reviewed SCI research papers or reviews Board of directors for the World Stroke Organization
Nijnsri C. Suwanwela Bangkok, Thailand 		More than 20 peer-reviewed SCI research papers or reviews Committee member of the Asia Pacific Stroke Conference
Vijay K. Sharma Singapore 	Editorial Board <i>Stroke</i>	More than 130 peer-reviewed SCI research papers or reviews
Byung-Woo Yoon Seoul, Korea 	International Editor <i>Stroke</i>	17 books or book chapters More than 150 peer-reviewed SCI research papers or reviews
Ji Hoe Heo Seoul, Korea 	Editorial Board <i>Yonsei Medical Journal</i> <i>Journal of Korean Medical Science</i> Previous Editor-in-Chief <i>Journal of Clinical Neurology</i>	10 books or book chapters More than 220 peer-reviewed SCI research papers or reviews

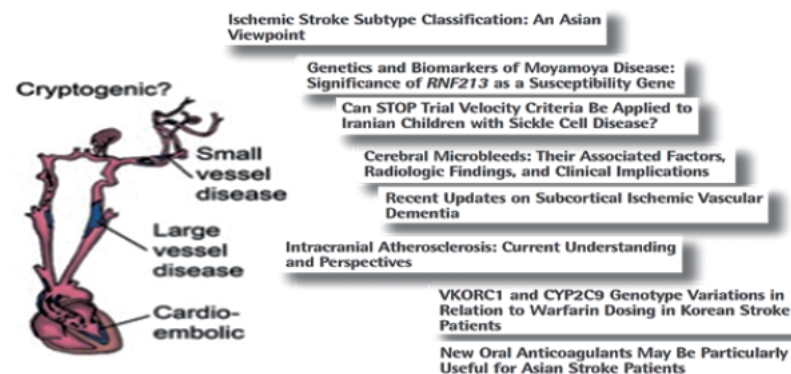
AIMS and SCOPE of the *Journal of Stroke*

Our focus is on the publishing of Asian stroke issues, and we have already published on the epidemiology and stroke issues from various Asian countries, such as Korea, Japan, China, India, Thailand, and Taiwan. We have also published about the Asian stroke characteristics, such as intracranial atherosclerosis, moyamoya disease, and problems in using drugs in Asian stroke patients (see figures below). These papers have attracted great interest and are currently actively cited.

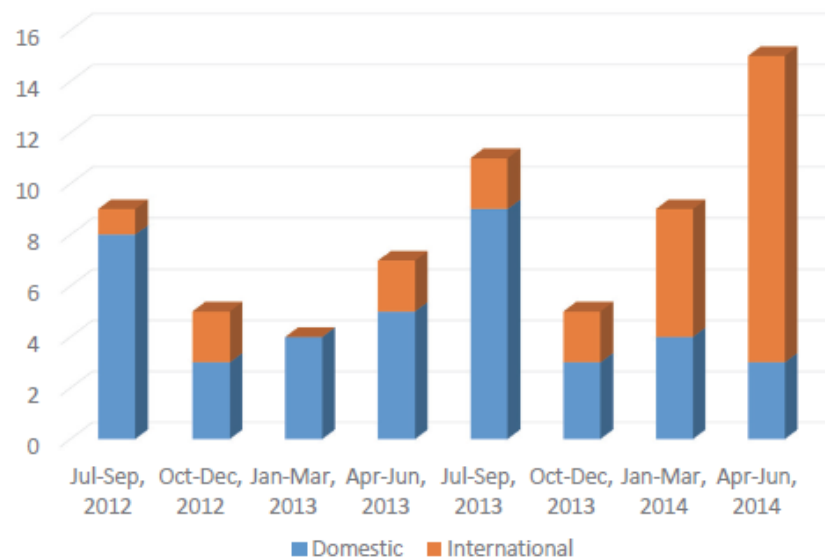
STROKE EPIDEMIOLOGY ISSUES IN ASIA



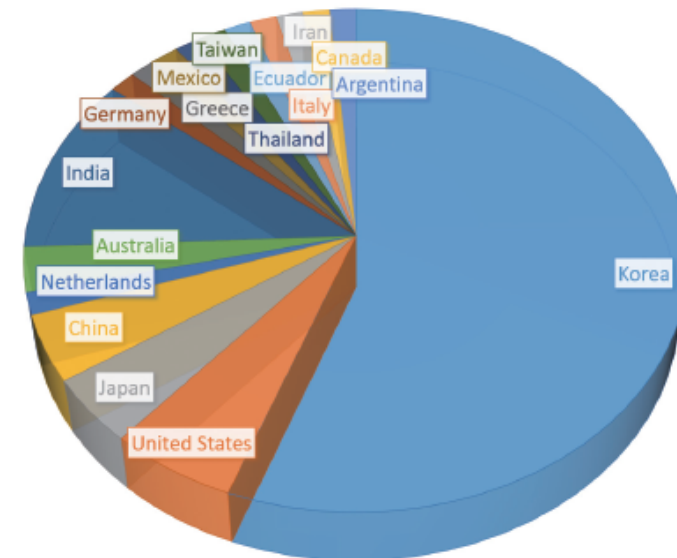
STROKE SUBTYPES SPECIFIC TO ASIANS



The *JOS* is now indexed in PMC, Synapse, KoreaMed, and DOU/Crossref, making it easily accessible for readers. Submissions from other countries are on the increase; thus far, authors from more than 15 countries (e.g., USA, Japan, China, Korea, India, Mexico, Iran, etc.) have submitted their research papers or reviews to us (See the figures below). However, for more active submission and broader readership, we believe that the *JOS* should be SCI-registered and obtain an impact factor. We would appreciate your assistance in making the *JOS* an SCI-registered journal, so that the *JOS* can contribute more intensely to the publication of stroke issues and research, particularly from Asia, thereby helping to resolve stroke problems in this region. We will endeavor to make the *JOS* a truly world-class journal that plays a significant role in advancing stroke research and decreasing stroke burden.



Proportion of domestic and international authors



Countries submitting articles to JoS

Impact Factor 올리기

- 학회원에게 인용 안내 (저널 상태, 인용 상태 안내, 논문 안내, 꾸준히)
- Review를 많이 (국내, 외국인)
가능한 broad 한 종설
인용될 만한 내용 (예, Epidemiology) 종설
- Original 을 stringent 하게
- Case report 를 Letter to editor 로
- 중간 중간 IF 검토

First impact factor 4.795 (2016)

- 뇌졸중 학회원, board member 의 cite
SCI 논문을 많이 쓰는 편 (세계 8 위)
애국심 ?
좋은, broad 한, 인용 가능한 종설
Authors 의 citation
Case report 없음
상대적으로 적은 original $\pi\pi$
- 학회, 의편협 및 여러 선생님의 도움
- Editorial team 노력

향후 과제

- 높은 impact factor 이후 변화
국내, 국외 좋은 논문 투고
- JOS 의 role 고려
학회지로서 ?
높은 IF 의 international journal ?
- Internationalization

결론

Committed 된 사람들이 모여 하면 된다

감사합니다 !