

# KoMCI 7년을 통하여 본 우리나라 의학학술지 영향력

2007 대한의학학술지편집인협의회 정기 Workshop

대한의학회

공효순

# KoMCI 사업의 목적

한국의학학술지가 국내 학계에서 얼마나 인용되는가를 객관적으로 측정

의학학술지의 평가도구로서 의학학술지의 질적 향상을 도모하여 의학발전에 기여

# KoMCI 연혁

✓ KoreaMed 등재 학술지를 대상으로 논문의 인용 Database 구축

- 2001년 3월 : KoMCI Project Team 구성
- 2002년 4월 : KoMCI 2000 발간
- 2002년 12월 : KoMCI 2001 발간
- 2003년 6월 : KoMCI 2002 발간
- 2004년 6월 : KoMCI 2003 발간
- 2005년 1월 : **KoMCI Web** 오픈
- 2005년 6월 : KoMCI 2004 발간
- 2006년 6월 : KoMCI 2005 발간
- 2006년 9월 : **KoMCI Journal Web** 오픈
- 2007년 5월 : KoMCI 2006 발간



**KoMCI** Korean Medical Citation Index

KoMCI Web KoMCI Journal Web Print + CD-ROM About Powered by KoreaMed

General Search | **Cited Reference Search** | Help

### Cited Reference Search

Enter information about the article you wish to find.

CITED AUTHOR: Enter the cited author's last name and initials (e.g., Jang YS for Jang Yeong Sil).

CITED JOURNAL: Enter abbreviated title as Korean J Radiol using the Cited Journal list as a guide.

CITED YEAR: Enter year Cited Journal was published as 2001 OR 2002.

SOURCE YEAR (Limit from 2000): Enter year Source Journal was published as 2001 OR 2002.

- You may omit any item if you wish.
- Journal titles should be entered as valid MEDLINE abbreviations.
- For Date, you may enter yyyy. For example, 2002.
- Author names are automatically truncated to account for varying initials, e.g., Jang Y will also match on Jang YA, Jang YB, Jang YC jr, etc. Enclose author names in double quotes to retrieve the exact match, e.g., "Jang Y".

Copyright © Korean Medical Citation Index Project. All Rights Reserved

**KoMCI** Korean Medical Citation Index

KoMCI Web **KoMCI Journal Web** Print + CD-ROM About Powered by KoreaMed

KoMCI

**View all journals.**  
 Sort results by

**Search for a specific journal.**  
 Enter title as MEDLINE abbreviations such as Korean J Parasitol. Use the Journal list to find journal title as a guide.

**Search a Journal according to Subject**  
 Click one or more Subjects.

ACOUSTICS  
 ALLERGY  
 ANATOMY & MORPHOLOGY  
 ANDROLOGY  
 ANESTHESIOLOGY

Copyright © Korean Medical Citation Index Project. All Rights Reserved

# KoMCI 학술지 인용 문헌 입력 현황

KoMCI	학술지 종수	논문수	총 참고문헌수 [A]	한국학술지문헌 [B]	비율 [B/Ax100]
2000	69종	7,856	170,254	14,511	8.52 %
2001	75종	7,236	156,737	13,739	8.77%
2002	81종	7,301	159,581	16,719	10.48%
2003	92종	7,921	173,245	19,930	11.50%
2004	105종	8,092	180,925	22,691	12.54%
2005	113종	8,728	195,537	25,119	12.85%
2006	119종	8,932	197,880	26,492	13.39%

# KoMCI 학술지의 연도별 총 발표 논문 수

년도	학술지 종수	논문 수	학술지 종수	논문 수	전년대비 증감
2000	69종	7,856	116종	9,867	
2001	75종	7,236	117종	9,016	-851
2002	81종	7,301	118종	8,853	-96
2003	92종	7,921	119종	9,051	198
2004	105종	8,092	119종	8,775	-276
2005	113종	8,728	119종	9,092	317
2006	119종	8,932	119종	8,932	-160

대한위암학회지 : 2001년 발행  
 감염과학요법 : 2003년 발행  
 Genomics Inform : 2003년 발행

# KoMCI 학술지 연도별 총 발표 논문수



## KoMCI 2000과 2001 논문 수의 비교 분석 결과

하나 이상 논문 수가 줄어든 학술지는 60종

20% 이상 줄어든 학술지는 27종

대한안과학회지(116편), 대한소화기내시경학회지(93편), 대한영상의학회지(85편), 대한마취과학회지(65편), Korean J Gastroenterol(61편)등의 학술지

하나 이상의 논문 수가 늘어난 학술지는 55종

20% 이상 늘어난 학술지는 17종

J Korean Neurosurg Soc(35편), 대한이식학회지(28편), 여성건강간호학회지(21편), 대한신장학회지(20편), J Vet Sci(15편)등의 학술지

2000년 의약분업

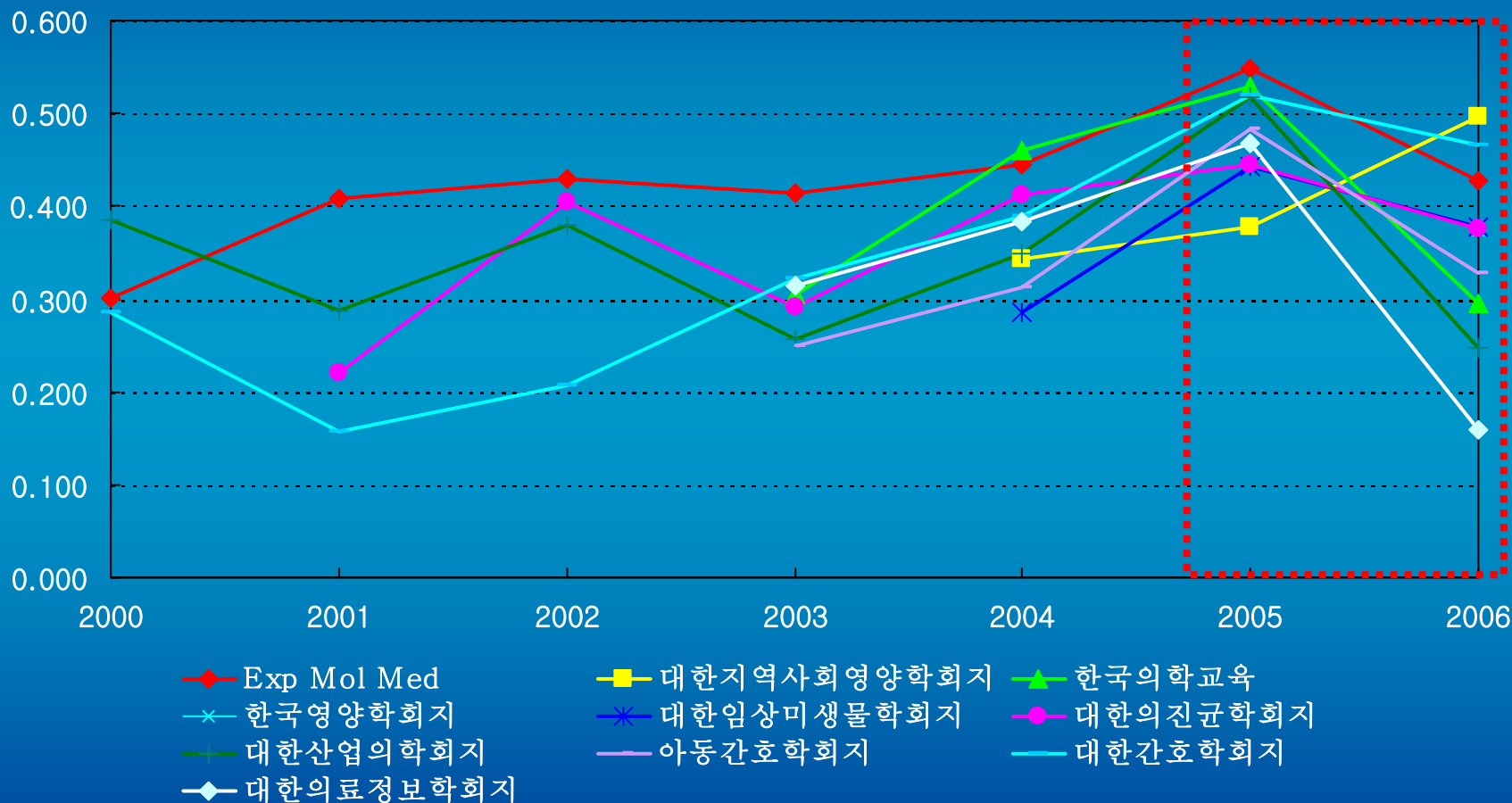
국내 논문의 SCI 학술지 게재 증가



## 영향력지표(IF) 값이 높은 KoMCI 학술지

JID	학술지	2000	2001	2002	2003	2004	2005	2006	평균
061	Exp Mol Med	0.301	0.408	0.429	0.415	0.445	0.549	0.428	0.425
106	대한지역사회영양학회지	-	-	-	-	0.344	0.377	0.496	0.406
097	한국의학교육	-	-	-	0.304	0.46	0.529	0.296	0.397
124	한국영양학회지	-	-	-	-	-	-	0.373	0.373
105	대한임상미생물학회지	-	-	-	-	0.286	0.443	0.377	0.369
075	대한의진균학회지	-	0.22	0.404	0.291	0.412	0.444	0.375	0.358
022	대한산업의학학회지	0.385	0.288	0.380	0.256	0.349	0.518	0.247	0.346
095	아동간호학회지	-	-	-	0.250	0.313	0.483	0.327	0.343
006	대한간호학회지	0.286	0.157	0.207	0.323	0.390	0.520	0.465	0.335
088	대한의료정보학회지	-	-	-	0.314	0.383	0.467	0.160	0.331

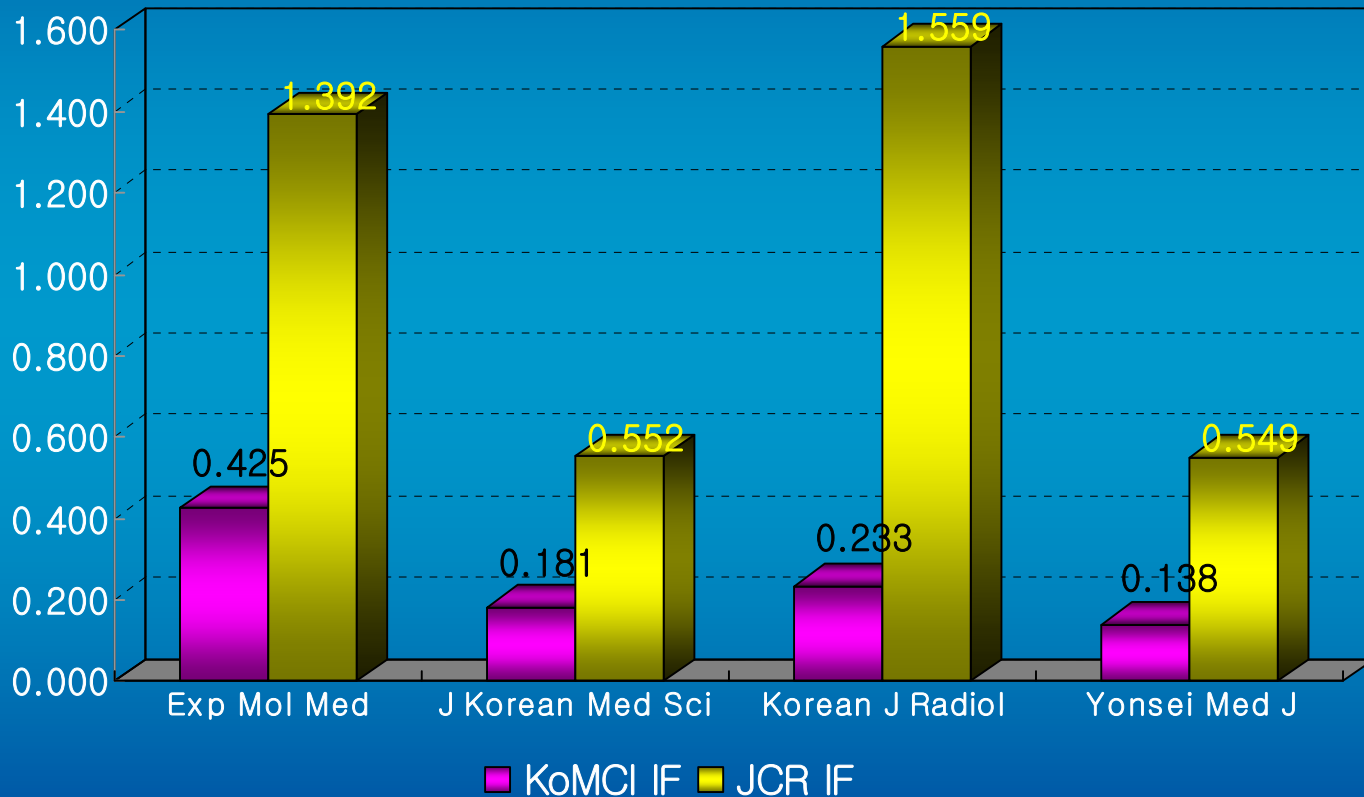
# 영향력지표(IF) 값이 높은 KoMCI 학술지



## 국내 SCI, MEDLINE 학술지의 KoMCI 영향력 지표

학술지명	SCI	MEDLINE	KoMCI IF	KoMCI ZIF
Korean J Hepatol		Yes	0.314	0.156
대한간호학회지		Yes	0.335	0.134
Korean J Gastroenterol		Yes	0.319	0.178
예방의학회지		Yes	0.294	0.122
Exp Mol Med	Yes	Yes	0.425	0.038
J Korean Med Sci	Yes	Yes	0.181	0.155
Korean J Intern Med		Yes	0.173	0.170
Korean J Ophthalmol		Yes	0.121	0.099
Korean J Parasitol		Yes	0.281	0.076
Korean J Radiol	Yes	Yes	0.233	0.142
Yonsei Med J	Yes	Yes	0.138	0.107
의사학		Yes	0.094	0.008
J Vet Sci	Yes	Yes	0.091	0.026

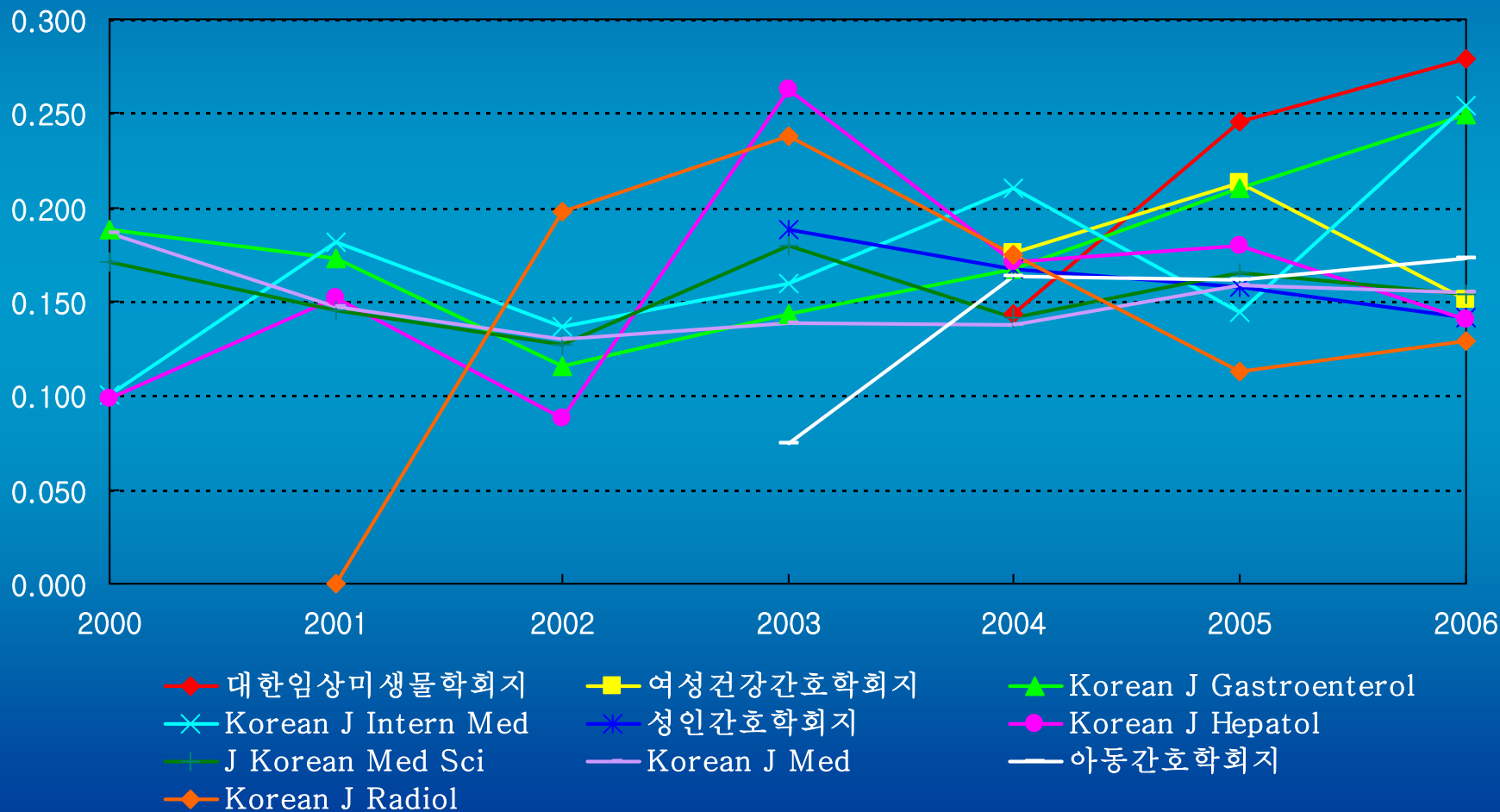
# SCI 등재 학술지의 KoMCI, JCR의 Impact Factor



## 자체학술지 인용을 제외한 영향력 지표(ZIF) 값이 높은 KoMCI 학술지

JID	학술지	2000	2001	2002	2003	2004	2005	2006	평균
105	대한임상미생물학회지	-	-	-	-	0.143	0.246	0.279	0.223
102	여성건강간호학회지	-	-	-	-	0.176	0.213	0.151	0.180
028	Korean J Gastroenterol	0.188	0.173	0.116	0.143	0.167	0.210	0.249	0.178
064	Korean J Intern Med	0.100	0.182	0.137	0.160	0.210	0.144	0.254	0.170
094	성인간호학회지	-	-	-	0.188	0.167	0.158	0.141	0.164
005	Korean J Hepatol	0.098	0.152	0.088	0.263	0.171	0.180	0.140	0.156
063	J Korean Med Sci	0.171	0.145	0.127	0.180	0.141	0.165	0.154	0.155
007	Korean J Med	0.186	0.147	0.130	0.139	0.138	0.159	0.155	0.151
095	아동간호학회지	-	-	-	0.075	0.163	0.161	0.173	0.143
068	Korean J Radiol	-	0.000	0.198	0.238	0.175	0.113	0.129	0.142

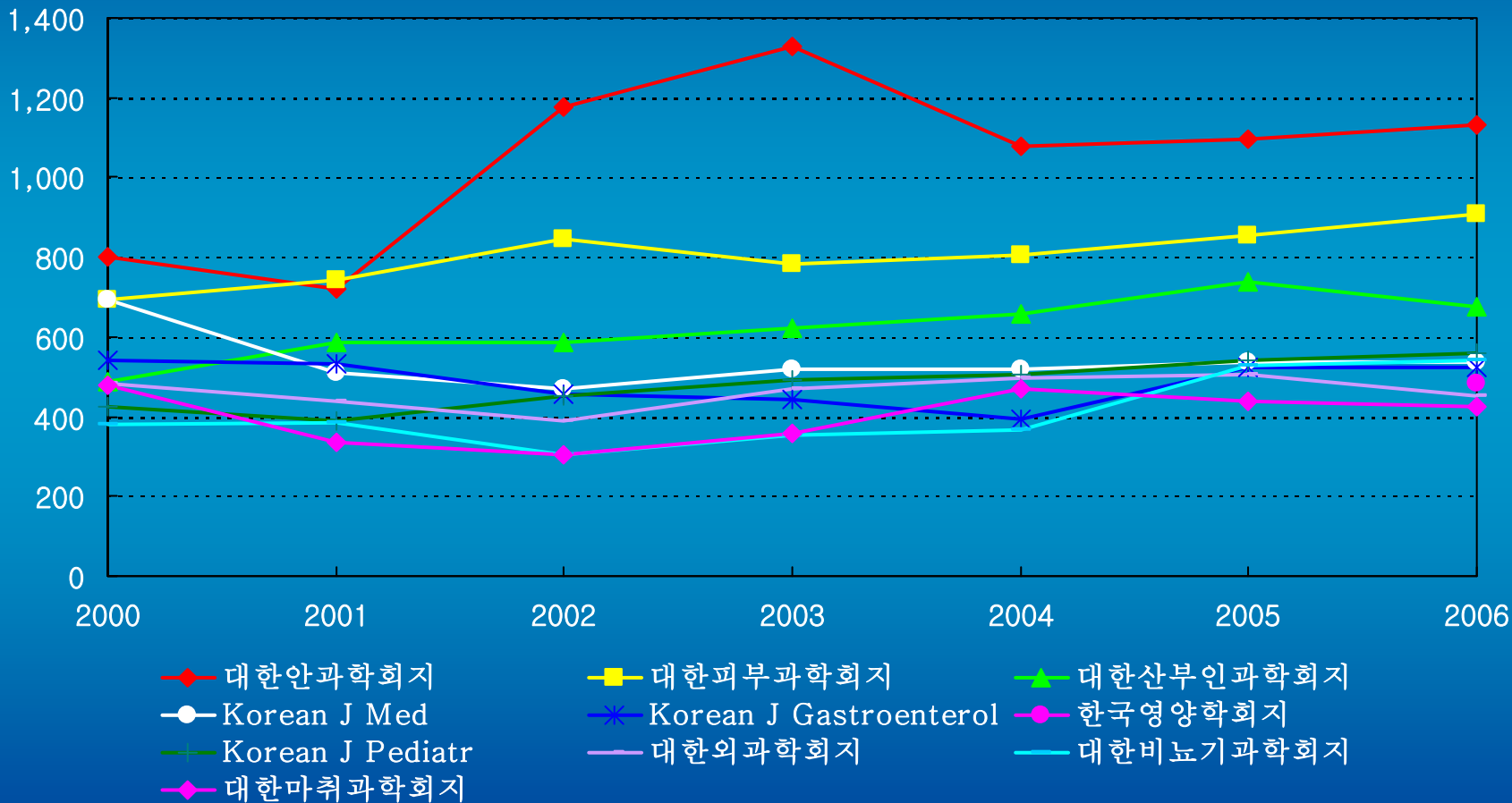
## 자체학술지 인용을 제외한 영향력 지표(ZIF) 값이 높은 KoMCI 학술지



# 학술지의 인용 빈도가 높은 KoMCI 학술지

JID	학술지	2000	2001	2002	2003	2004	2005	2006	평균
035	대한안과학회지	800	721	1,175	1,327	1,079	1098	1130	1047.1
048	대한피부과학회지	694	742	847	784	807	854	908	805.1
021	대한산부인과학회지	488	588	585	623	658	738	677	622.4
007	Korean J Med	693	508	471	521	519	537	535	540.6
028	Korean J Gastroenterol	539	531	456	445	395	525	524	487.9
124	한국영양학회지	-	-	-	-	-	-	484	484
052	Korean J Pediatr	426	388	451	492	504	543	560	480.6
037	대한외과학회지	483	440	389	468	496	507	450	461.9
020	대한비뇨기과학회지	381	383	304	353	367	526	541	407.9
011	대한마취과학회지	477	336	302	357	468	440	425	400.7

## 학술지의 인용 빈도가 높은 KoMCI 학술지





# KoMCI Journal Web

- **학술지 단위의 인용 분석 데이터베이스**
  - **Articles**
  - **Total Cites**
  - **Self-Citation Rate**
  - **Citing Journals List**
  - **Cited Journals List**
  - **IF : Impact Factor**
  - **ZIF : Z Impact Factor (excluding journal self-citation)**
  - **Citing Half-Life**
  - **Cited Half-Life**

## Background & Purpose

Beginning in the mid 1990s, organizations who were dependent on the Government of the Republic of Korea for their funding came to the conclusion that relatively few opportunities for obtaining funds were available to applicants who had not published a sufficient number of papers in international journals. This led professors at medical schools and medical scientists to submit more manuscripts to international journals. This Government policy fomented a crisis for domestic journals that had limited funds. The initial effect of this policy was an annual decrease in the number of submissions to domestic journals from domestic scientists. This said, the Korean Academy of Medical Sciences (KAMS) was aware of the value of domestic medical journals, with their focus on the medical health problems of Koreans, given that there are a number of health issues unique to Koreans. Therefore, it was felt that discrimination in favor of the international journals, at the expense of domestic journals, should be gradually reduced. Moreover, it was felt that the domestic medical journals should be evaluated fairly. To reach these goals, the executive committee of KAMS decided to develop a citation index for Korean medical journals.

In March 2001, KAMS launched the Korean Medical Citation Index (KoMCI) Project to realize these goals. First, they evaluated the citation index data as an impact factor. Subsequently, the KoMCI book and CD-ROM were published. After maintaining the databases for two years, the KoMCI Project set about establishing the KoMCI Web, a system for searching for cited references in specific papers, in March 2003.

When analyzing and providing citation data, the KoMCI Project dealt only with domestic journals cited in domestic journals, since the data on foreign journals cited in a domestic journal could not be analyzed within the scope of the KoMCI Project. Therefore, the raw data to be analyzed in the KoMCI Project and the database provided by the KoMCI Web contain domestic data only. The KoMCI Web consists of two major databases: a source database and a citation database. The source database is indebted to KoreaMed as it is maintained and updated daily by the Korean Association of Medical Journal Editors (KAMJE). From the KoMCI Web, it is possible to identify whose paper cites whose paper. Therefore, the results are highly dynamic and interactive. It can provide specific information on researchers and groups in related fields.

The KoMCI book and CD-ROM are written in Korean, but an English summary will be provided. At KoMCI Web, anybody who is interested in Korean medical journals and their citation references will be able to surf the Web of Korean medical information freely. In addition, authors may use the KoMCI Web to find out who is citing their papers published in Korea.

The three items, the KoMCI book, and CD-ROM, KoMCI Web constitute a unique database, not only in Korea, but also worldwide. They reflect the desire of Korean physicians and medical scientists to contribute to global health, as well as to enhance the internet profile of Korea, formerly known as

KoMCI

View all   
Sort results

Search for a specific  
Enter title as MEDLINE  
Use the Journal list

Search a Journal  
Click one or more

- ACOUSTICS
- ALLERGY
- ANATOMY & MORPHOLOGY
- ANDROLOGY
- ANESTHESIOLOGY

- Select   
Select  
Journal Title  
Articles  
Total Cites  
Self-Citation  
Self-Citing  
Self-Cited  
IF: Impact Factor  
ZIF: Z Impact Factor  
Cited Half-Life  
Citing Half-Life

such as Korean J Parasitol.  
as a guide.

KoMCI Web KoMCI Journal Web

KoMCI 2006

Bibliographic Data IF: Impact Factor  
Citation Information ZIF: Z Impact Factor

Bibliographic Data

Full Journal Title	Journal of Korean Medical Science
Abbreviated Journal Title	J Korean Med Sci
ISSN	1011-8934
Issues / Year	6
Publisher	Korean Academy of Medical Science
Publisher Address	Korean Academy of Medical Science, Seoul 140-721, South Korea
Subject Categories	MEDICINE, GENERAL AND INTERNAL; MEDICINE, RESEARCH AND EXPERIMENTAL

Citation Information

CITED JOURNAL DATA CITING JOURNAL DATA

No.	Abbreviated Journal Title	ISSN	Articles
1	J Korean Med Sci	1011-8934	216

KoMCI 2006

Cited Journal: Journal of Korean Medical Science (ISSN: 1011-8934)

Number of times articles published in 2006 (in journals below) cited articles published in *J Korean Med Sci* (in years below).

Download Journal Titles in Korean

Display 10 Items 1-10 of 69 Page 1 of 7 Select page: 1234567

Rank.	IF	Citing Journal	All	2006	2005	2004	2003	2002	2001	2000	1999	1998	1997	Rest
		All Journals	271	10	37	34	31	25	17	27	11	13	8	58
1	0.186	J Korean Med Sci	26	3	4	8	4	1	1	1	1	1	0	2
2	0.185	Korean J Med	15	0	3	2	1	0	0	2	0	1	1	5
3	0.088	Korean J Pathol	11	1	0	0	1	2	2	0	0	0	0	5
4	0.164	Korean J Pediatr*	10	0	3	0	2	0	0	0	0	1	0	4
5	0.213	Korean J Gastrointest Endosc	10	0	0	2	0	0	1	0	1	0	0	6
6	0.215	Korean J Dermatol	10	1	1	0	2	2	1	1	0	2	0	0
7	0.128	J Korean Neurol Assoc	9	1	1	0	0	1	0	4	0	0	0	2
8	0.241	Korean J Nephrol	9	0	1	0	0	1	3	1	0	0	1	2
9	0.146	Infect Chemother	8	0	1	1	2	0	0	0	1	1	1	1
10	0.045	J Korean Med Assoc	8	0	4	2	0	0	1	1	0	0	0	0

Display 10 Items 1-10 of 69 Page 1 of 7 Select page: 1234567

KoMCI 2006

Citing Journal: Journal of Korean Medical Science (ISSN: 1011-8934)

Number of times articles published in journals below (in years below) where cited in *J Korean Med Sci* in 2006.

Download Journal Titles in Korean

Display 10 Items 1-10 of 69 Page 1 of 7 Select page: 1234567

Rank.	IF	Cited Journal	All	2006	2005	2004	2003	2002	2001	2000	1999	1998	1997	Rest
		All Journals	246	3	19	41	34	25	24	21	20	15	9	35
1	0.186	J Korean Med Sci	26	3	4	8	4	1	1	1	1	1	0	2
2	0.137	Korean J Asthma Allergy Clin Immunol	18	0	0	2	1	1	4	6	0	2	0	2
3	0.164	Korean J Pediatr	13	0	2	1	3	1	0	1	0	2	1	2
4	0.185	Korean J Med	12	0	0	4	0	1	1	0	2	0	0	4
5	0.146	Infect Chemother	11	0	2	2	0	0	4	0	0	0	0	3
6	0.215	Korean J Dermatol	8	0	2	0	2	1	1	0	0	0	0	2
7	0.151	J Korean Neurosurg Soc	8	0	1	0	2	0	2	0	1	1	0	1
8	0.145	Yonsei Med J	8	0	0	2	0	1	2	2	0	0	0	1
9	0.254	Korean J Intern Med	7	0	1	0	2	2	1	0	0	0	0	1
10	0.193	Korean J Obstet Gynecol	7	0	0	2	1	3	0	0	0	1	0	0

Display 10 Items 1-10 of 69 Page 1 of 7 Select page: 1234567

KoMCI Web KoMCI Journal Web KoMCI Print CD-

KoMCI 2006

Bibliographic Data IF: Impact Factor  
Citation Information ZIF: Z Impact Factor

IF: Impact Factor

IF TREND

Cites in 2006 to articles published in: 2005 = 37  
2004 = 34  
Sum = 71

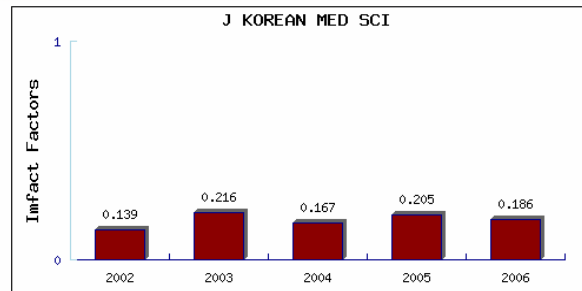
Calculation:  $\frac{\text{Cites to recent articles}}{\text{Number of recent articles}} = \frac{71}{382} = 0.186$

ZIF: Z Impact Factor

ZIF TREND

Excluding Journal self-citation 2005 = 33  
Cites in 2006 to articles published in: 2004 = 26  
Sum = 59

Calculation:  $\frac{\text{Cites to recent articles}}{\text{Number of recent articles}} = \frac{59}{382} = 0.154$



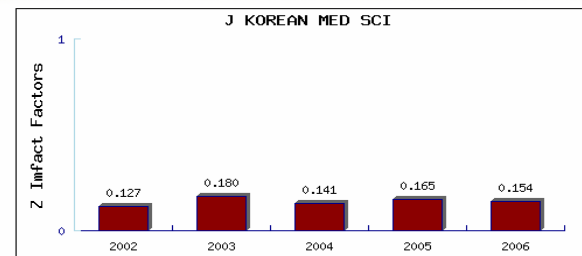
2006 IF: Impact Factor

Cites in 2006 to articles published in: 2005 = 37 Number of articles published in: 2005 = 207  
2004 = 34 2004 = 175  
Sum = 71 Sum = 382

Calculation:  $\frac{\text{Cites to recent articles}}{\text{Number of recent articles}} = \frac{71}{382} = 0.186$

2005 IF: Impact Factor

Cites in 2005 to articles published in: 2004 = 37 Number of articles published in: 2004 = 175  
2003 = 35 2003 = 176  
Sum = 72 Sum = 351



2006 ZIF: Z Impact Factor

Excluding Journal self-citation  
Cites in 2006 to articles published in: 2005 = 33 Number of articles published in: 2005 = 207  
2004 = 26 2004 = 175  
Sum = 59 Sum = 382

Calculation:  $\frac{\text{Cites to recent articles}}{\text{Number of recent articles}} = \frac{59}{382} = 0.154$

2005 ZIF: Z Impact Factor

Excluding Journal self-citation  
Cites in 2005 to articles published in: 2004 = 28 Number of articles published in: 2004 = 175  
2003 = 30 2003 = 176  
Sum = 58 Sum = 351

KoMCI 2006

- Bibliographic Data
- IF: Impact Factor
- Journal Cited Half Life
- Journal Citing Half-Life
- Citation Information
- ZIF: Z Impact Factor
- Cited Journal Graph
- Citing Journal Graph

### Journal Cited Half-Life

The cited half-life for *J Korean Med Sci* is the median age of its articles cited in the **KoMCI 2006**. Half of the citations to *J Korean Med Sci* are to articles published within the cited half-life.

Cited Half-Life: **4.94 years**

Cited Year	2006	2005	2004	2003	2002	2001	2000	1999	1998	1997	1996-all
No. of Cites from 2006	10	37	34	31	25	17	27	11	13	8	58
Cumulative %	3.69	17.34	29.89	41.33	50.55	56.83	66.79	70.85	75.65	78.6	100

### Cited Half-Life Calculations: [HELP](#)

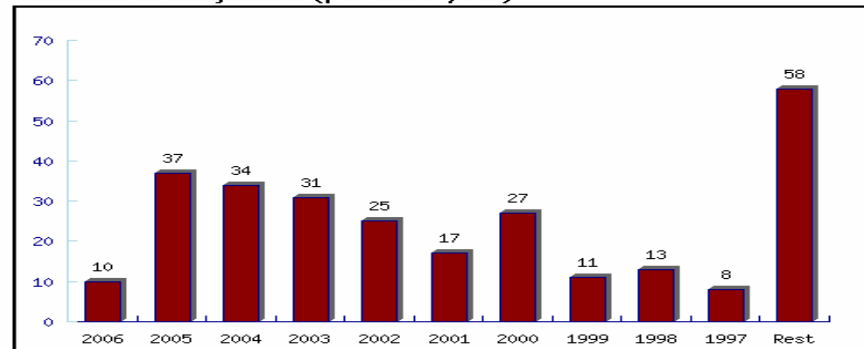
The cited half-life calculation finds the number of publication years from the **KoMCI 2006** that account for 50% of citations received by *J Korean Med Sci*.

### Cited Journal Graph

CITED JOURNAL DATA

This graph shows the distribution by cited year of citations to articles published in *J Korean Med Sci*.

Citations to the journal (per cited year)



## KoMCI 대상 학술지 오류 레코드 수

년도	해결 가능 레코드 수	미해결 레코드 수	총 레코드 수
KoMCI 2000	631건	76건	710건
KoMCI 2001	-	70건	-
KoMCI 2002	623건	45건	668건
KoMCI 2003	728건	131건	859건
KoMCI 2004	1,146건	106건	1,252건
KoMCI 2005	3,786건	93건	3,879건
KoMCI 2006	2,924건	95건	3,019건

• KoMCI 2001 초기 오류 레코드 수는 기록되어 있지 않아 확인 할 수 없음.

# KoMCI 2006 오류 레코드 분포 현황

author	title	year	volume	issue	firstpage	error
Kim KI	J Korean Neuropsychiatr Assoc	1978	17	4	449	a에러:Kim KL->Kim KI 수정.
Kang JC	Korean J Intern Med	1999	57	4	764	t에러:Korean J Intern Med->Korean J Med
Lee YK	Korean J Nutr	1995	19	1	80	t에러:Korean J Nutr->J Korean Diabetes Assoc
Choe MA	Journal of Korean Academy of Nursing	1988	18	2	105	y에러:1998->1988 수정.
Nam SH	J Korean Ophthalmol Soc	1990	31	8	1089	v:32->31 수정. I없음->8입력
Min BM	J Korean Ophthalmol Soc	1989	30	5	779	p에러:773->779 수정.

■ 저자명 
 ■ 학술지명 
 ■ 년도 
 ■ 볼륨 
 ■ 페이지 
 ■ 기타



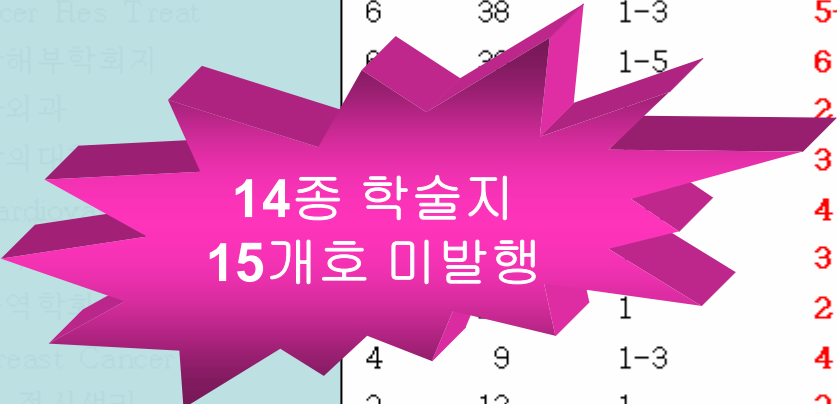
**한국의학학술지 인용색인 정보개발사업단** <직인생략>  
**Korean Medical Citation Index Project (KoMCI Project)**

우140-031 서울시

문서번호 KoMCI  
 시행일자 2007  
 수신 수신  
 참조 학술지  
 제목 「KoMCI

<첨부> 「KoMCI 2006」대상 미발행 학술지 현황

구분	간기	분류	소장호	미발행호
029 대한수혈학회지	2	17	1	2
036 Cancer Res Treat	6	38	1-3	5-6
049 대한폐부학회지	6	29	1-5	6
053 소아외과				2
057 전남의대				3
059 J Cardio				4
060 항암				3
073 한국역학			1	2
086 J Breast Cancer	4	9	1-3	4
101 수면·경신생리	2	13	1	2
103 대한간길학회지	2	10	1	2
110 Korean J Hepatobiliary Pancreat Surg	4	10	1-3	4
116 재활간호학회지	2	9	1	2
122 대한의상학회지	2	19	1	2



1. 귀 학  
 2. 본회  
 Citation Index)를  
 인용색인 정보를  
 정입니다. 그러니  
 미발행 상태입니  
 지들에 대해서는  
 정 하였습니다. 이  
 3. 2007  
 보내주시기 바랍  
 주 소  
 이메일

첨 부 : KoMCI 2006 대상 미발행 학술지 현황 1부, 끝.